

Product datasheet for **CS619889**

Frozen Tissue Sections, Pancreas

Product data:

| | |
|---|-----------------------------------|
| Product Type: | Frozen Sections |
| Disease State: | Cancer |
| Diagnosis Category: | Carcinoid/Neuroendocrine Tumors |
| Tissue: | Pancreas |
| Frozen Sample ID: | FR0001879B |
| Case ID: | CU0000005471 |
| Tissue of Origin: | Pancreas |
| Site of Finding: | Pancreas |
| Appearance: | Tumor |
| Sample Diagnosis (from Pathology Verification): | Tumor of pancreas, neuroendocrine |
| Normal: | 0% |
| Lesional: | 0% |
| Tumor: | 75% |
| Tumor Hypo/Acellular Stroma: | 25% |
| Tumor Hypercellular Stroma: | 0% |
| Necrosis: | 0% |
| CASE Diagnosis (from medical center path report): | Tumor of pancreas, neuroendocrine |
| Age: | 64 |
| Gender: | Female |
| Tumor Grade: | Not Reported |
| Minimum Stage Grouping: | Not Reported |

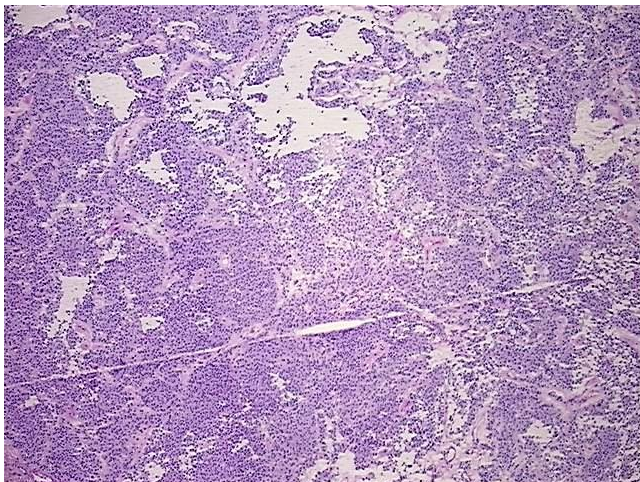


[View online »](#)

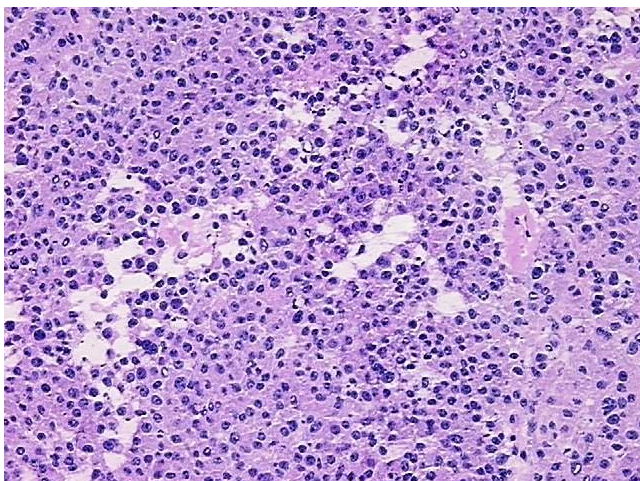
Storage: Store frozen tissue sections at -80°C.

Stability: All frozen tissue sections are stable for 1 year from date of purchase if stored at -80°C without repeated freeze/thaws.

Product images:



4x Image



20x Image