

Product datasheet for **CS619886**

Frozen Tissue Sections, Pancreas

Product data:

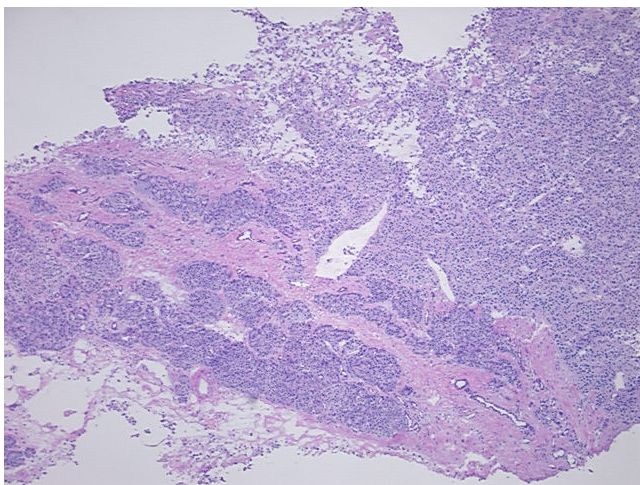
Product Type:	Frozen Sections
Disease State:	Cancer
Diagnosis Category:	Carcinoid/Neuroendocrine Tumors
Tissue:	Pancreas
Frozen Sample ID:	FR00018793
Case ID:	CU0000005471
Tissue of Origin:	Pancreas
Site of Finding:	Pancreas
Appearance:	T
Sample Diagnosis (from Pathology Verification):	Tumor of pancreas, neuroendocrine
Normal:	45%
Lesional:	0%
Tumor:	50%
Tumor Hypo/Acellular Stroma:	5%
Tumor Hypercellular Stroma:	0%
Necrosis:	0%
Pathology Verification notes from H&E review:	Normal: 95% exocrine pancreas, 5% endocrine pancreas
CASE Diagnosis (from medical center path report):	Tumor of pancreas, neuroendocrine
Age:	64
Gender:	Female
Tumor Grade:	Not Reported



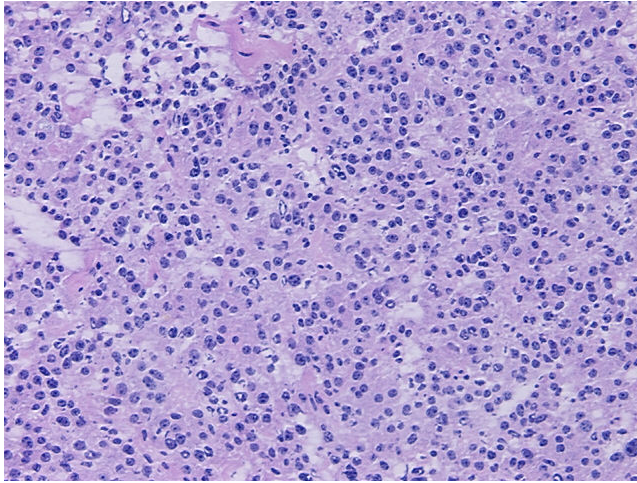
[View online »](#)

Minimum Stage Grouping:	Not Reported
T (Extent of Primary Tumor):	Not Reported
N (Lymph node metastasis):	Not Reported
M (Distant metastasis):	Not Reported
Diagnostic Test Results:	Synaptophysin ~ SYN ! by IHC,Positive; Chromogranin A ~ Parathyroid secretory protein 1 ! by IHC,Positive, focal; CD34 ~ HPCA ! by IHC,Positive
Storage:	Store frozen tissue sections at -80°C.
Stability:	All frozen tissue sections are stable for 1 year from date of purchase if stored at -80°C without repeated freeze/thaws.

Product images:



4x Image



20x Image