

## Product datasheet for CS619779

### Frozen Tissue Sections, Breast

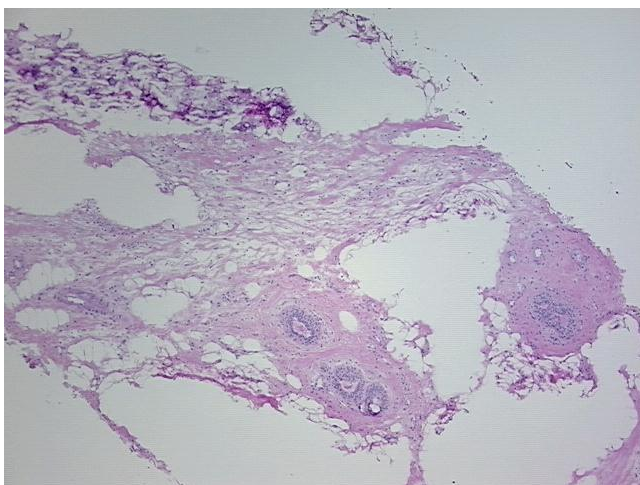
#### Product data:

Product Type:	Frozen Sections
Disease State:	Other Disease
Diagnosis Category:	Biopsy Site Changes
Tissue:	Breast
Frozen Sample ID:	FR000185D2
Case ID:	CU0000005461
Tissue of Origin:	Breast
Site of Finding:	Breast
Appearance:	L
Sample Diagnosis (from Pathology Verification):	Biopsy site changes
Normal:	0%
Lesional:	100%
Tumor:	0%
Tumor Hypo/Acellular Stroma:	0%
Tumor Hypercellular Stroma:	0%
Necrosis:	0%
Pathology Verification notes from H&E review:	10% glandular epithelium, 40% fibrous stroma, 50% fat
CASE Diagnosis (from medical center path report):	Carcinoma in situ of breast, ductal
Age:	69
Gender:	Female
Tumor Grade:	Not Reported

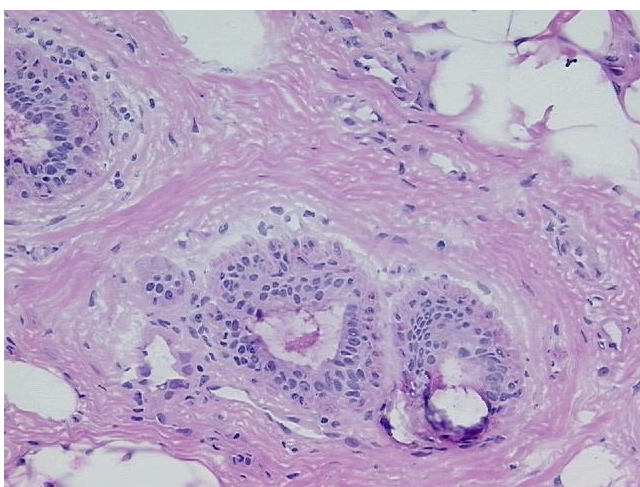


[View online »](#)

T (Extent of Primary Tumor):	Tis
N (Lymph node metastasis):	N0
M (Distant metastasis):	MX
Storage:	Store frozen tissue sections at -80°C.
Stability:	All frozen tissue sections are stable for 1 year from date of purchase if stored at -80°C without repeated freeze/thaws.

**Product images:**

4x Image



20x Image