

## Product datasheet for **CS619527**

### Frozen Tissue Sections, Lymph node

#### Product data:

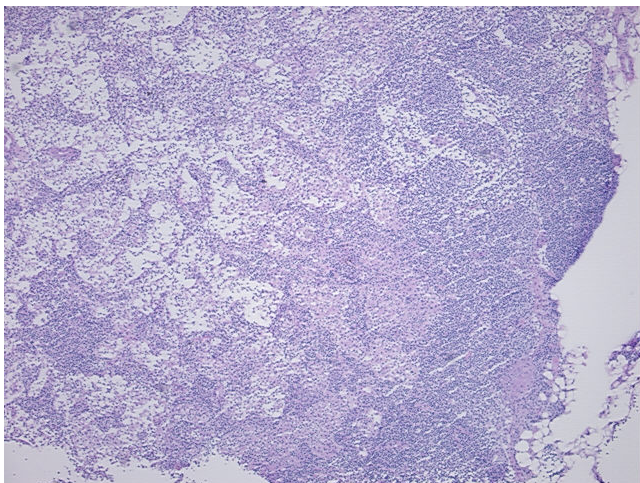
Product Type:	Frozen Sections
Disease State:	Other Disease
Diagnosis Category:	Granuloma
Tissue:	Lymph node
Frozen Sample ID:	FR000180EC
Case ID:	CU0000005420
Tissue of Origin:	Lymph node
Site of Finding:	Lymph node
Appearance:	L
Sample Diagnosis (from Pathology Verification):	Granuloma of lymph node
Normal:	95%
Lesional:	5%
Tumor:	0%
Tumor Hypo/Acellular Stroma:	0%
Tumor Hypercellular Stroma:	0%
Necrosis:	0%
Pathology Verification notes from H&E review:	5% follicles, 95% inter-follicular zone
CASE Diagnosis (from medical center path report):	Crohns disease
Age:	19
Gender:	Female
Storage:	Store frozen tissue sections at -80°C.



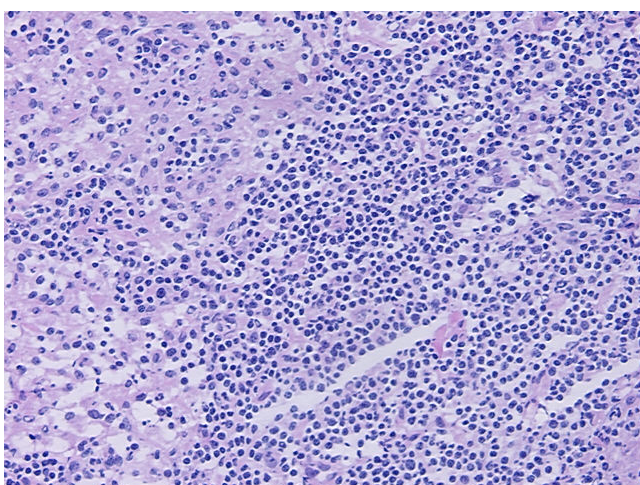
[View online »](#)

**Stability:** All frozen tissue sections are stable for 1 year from date of purchase if stored at -80°C without repeated freeze/thaws.

**Product images:**



4x Image



20x Image