

Product datasheet for **CS619285**

Frozen Tissue Sections, Small intestine

Product data:

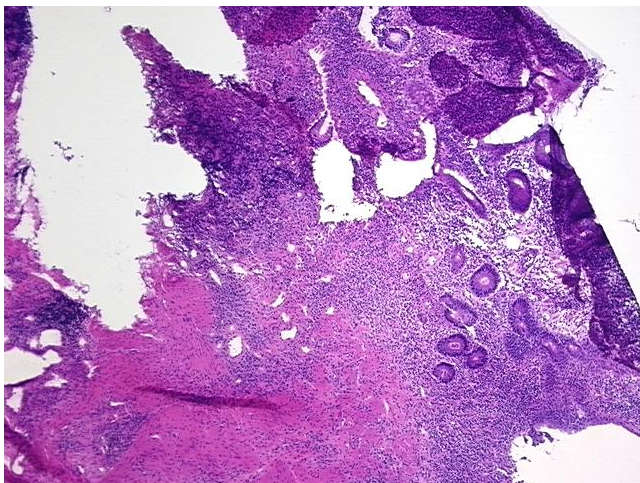
Product Type:	Frozen Sections
Disease State:	Other Disease
Diagnosis Category:	Inflammation (various)
Tissue:	Small intestine
Frozen Sample ID:	FR00026E7E
Case ID:	CU0000005400
Tissue of Origin:	Small intestine
Site of Finding:	Small intestine
Appearance:	L
Sample Diagnosis (from Pathology Verification):	Enteritis, chronic active
Normal:	0%
Lesional:	100%
Tumor:	0%
Tumor Hypo/Acellular Stroma:	0%
Tumor Hypercellular Stroma:	0%
Necrosis:	0%
Pathology Verification notes from H&E review:	chronic active enteritis: 30% mucosa, 40% submucosa containing lymphoid nodules, 30% muscle; no granuloma present
CASE Diagnosis (from medical center path report):	Crohns disease
Age:	39
Gender:	Female
Storage:	Store frozen tissue sections at -80°C.



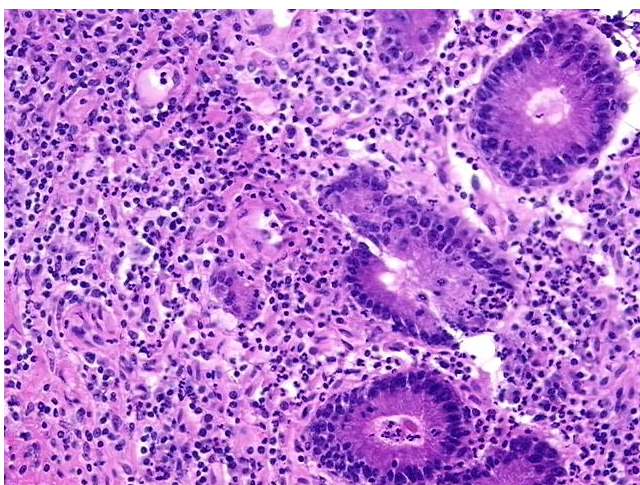
[View online »](#)

Stability: All frozen tissue sections are stable for 1 year from date of purchase if stored at -80°C without repeated freeze/thaws.

Product images:



4x Image



20x Image