

Product datasheet for **CS619054**

Frozen Tissue Sections, Pancreas

Product data:

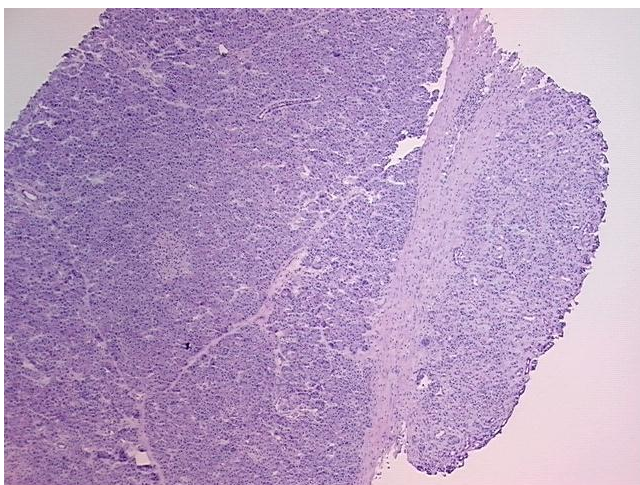
Product Type:	Frozen Sections
Disease State:	Other Disease
Diagnosis Category:	Pancreatitis
Tissue:	Pancreas
Frozen Sample ID:	FR000267BC
Case ID:	CU0000005379
Tissue of Origin:	Pancreas
Site of Finding:	Pancreas
Appearance:	L
Sample Diagnosis (from Pathology Verification):	Pancreatitis
Normal:	95%
Lesional:	5%
Tumor:	0%
Tumor Hypo/Acellular Stroma:	0%
Tumor Hypercellular Stroma:	0%
Necrosis:	0%
Pathology Verification notes from H&E review:	lesion: acute and chronic pancreatitis; normal: 93% exocrine epithelium, 5% endocrine epithelium, 2% ducts
CASE Diagnosis (from medical center path report):	Pancreatitis
Age:	27
Gender:	Female
Storage:	Store frozen tissue sections at -80°C.



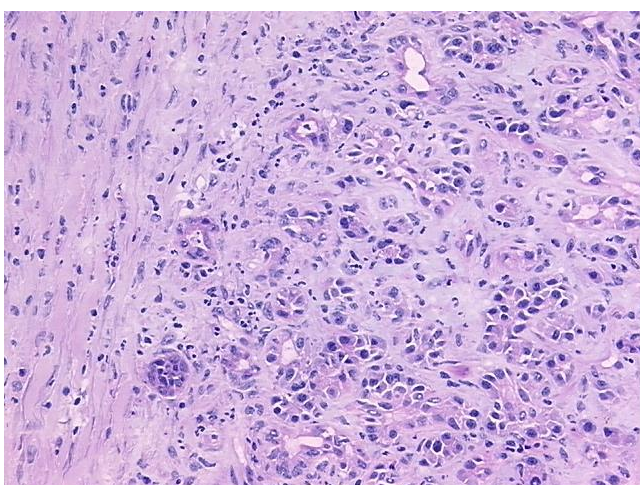
[View online »](#)

Stability: All frozen tissue sections are stable for 1 year from date of purchase if stored at -80°C without repeated freeze/thaws.

Product images:



4x Image



20x Image