

## Product datasheet for CS618994

### Frozen Tissue Sections, Ileum

#### Product data:

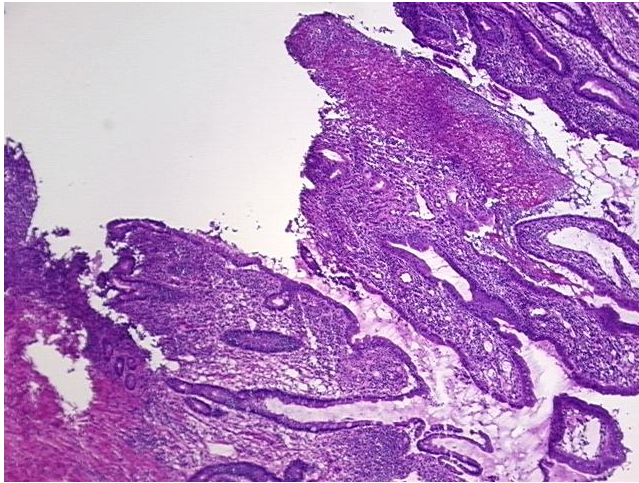
Product Type:	Frozen Sections
Disease State:	Other Disease
Diagnosis Category:	Inflammation (various)
Tissue:	Small intestine
Frozen Sample ID:	FR00026611
Case ID:	CU0000005374
Tissue of Origin:	Ileum
Site of Finding:	Ileum
Appearance:	L
Sample Diagnosis (from Pathology Verification):	Enteritis, chronic active
Normal:	0%
Lesional:	100%
Tumor:	0%
Tumor Hypo/Acellular Stroma:	0%
Tumor Hypercellular Stroma:	0%
Necrosis:	0%
Pathology Verification notes from H&E review:	chronic active enteritis with mucosal ulceration: 20% mucosa, 35% submucosa, 45% muscle; no granuloma present
CASE Diagnosis (from medical center path report):	Crohns disease
Age:	53
Gender:	Female
Storage:	Store frozen tissue sections at -80°C.



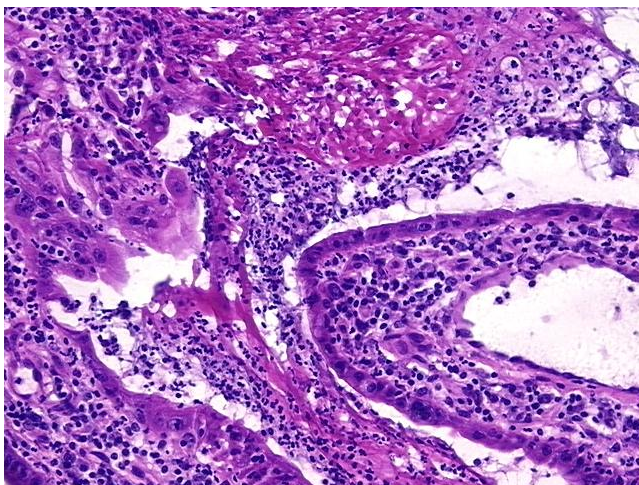
[View online »](#)

**Stability:** All frozen tissue sections are stable for 1 year from date of purchase if stored at -80°C without repeated freeze/thaws.

**Product images:**



4x Image



20x Image