

## Product datasheet for **CS618965**

### Frozen Tissue Sections, Myometrium

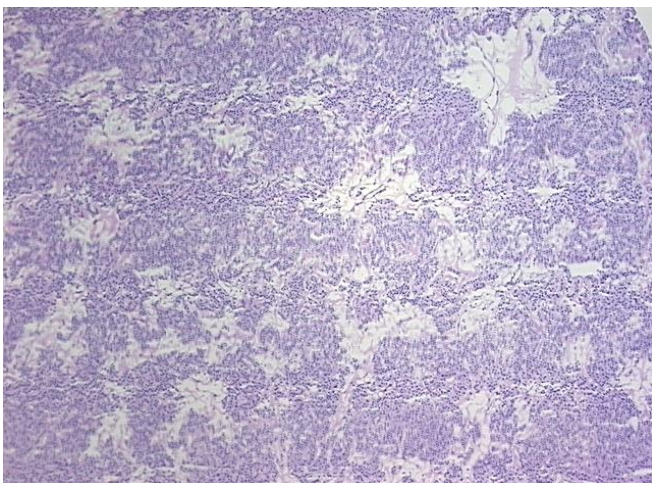
#### Product data:

Product Type:	Frozen Sections
Disease State:	Cancer
Diagnosis Category:	Sarcoma
Tissue:	Myometrium
Frozen Sample ID:	FR0001698D
Case ID:	CU0000005360
Tissue of Origin:	Myometrium
Site of Finding:	Ovary: right
Appearance:	T
Sample Diagnosis (from Pathology Verification):	Leiomyosarcoma
Normal:	0%
Lesional:	0%
Tumor:	85%
Tumor Hypo/Acellular Stroma:	15%
Tumor Hypercellular Stroma:	0%
Necrosis:	0%
Pathology Verification notes from H&E review:	Tumor: directly involving the adjacent ovary
CASE Diagnosis (from medical center path report):	Leiomyosarcoma
Age:	62
Gender:	Female
Tumor Grade:	FIGO G3: Poorly differentiated

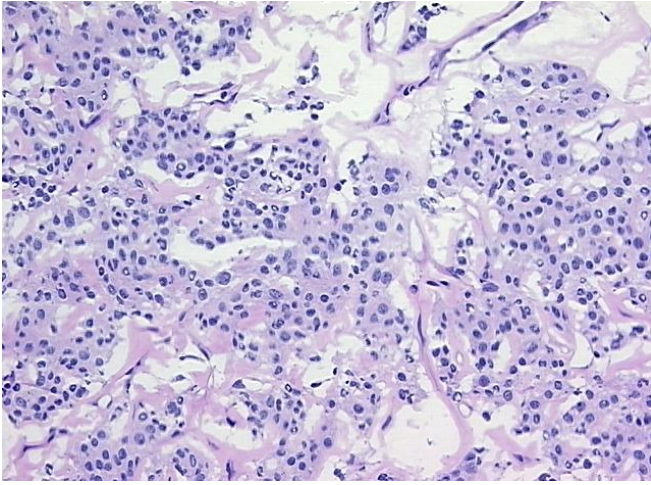


[View online »](#)

Minimum Stage Grouping:	IIIA
T (Extent of Primary Tumor):	T3a
N (Lymph node metastasis):	N0
M (Distant metastasis):	MX
Diagnostic Test Results:	Smooth muscle actin ~ SMA ~ Alpha-SMA ! by IHC,Positive; Synaptophysin ~ SYN ! by IHC,Negative; Desmin ! by IHC,Positive; Inhibin,Negative; Chromogranin A ~ Parathyroid secretory protein 1 ! by IHC,Negative; Cytokeratin AE1/AE3 ~ AE1/AE3 ! by IH
Storage:	Store frozen tissue sections at -80°C.
Stability:	All frozen tissue sections are stable for 1 year from date of purchase if stored at -80°C without repeated freeze/thaws.

**Product images:**

4x Image



20x Image