

Product datasheet for **CS618945**

Frozen Tissue Sections, Pleura

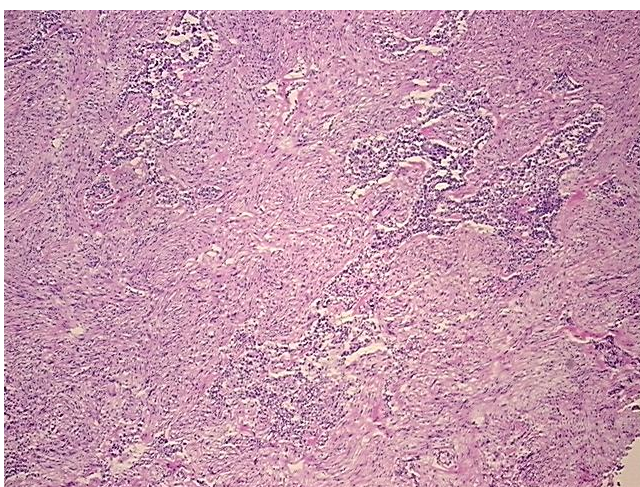
Product data:

Product Type:	Frozen Sections
Disease State:	Cancer
Diagnosis Category:	Mesothelioma
Tissue:	Lung
Frozen Sample ID:	FR00016972
Case ID:	CU0000005358
Tissue of Origin:	Pleura
Site of Finding:	Pleura
Appearance:	T
Sample Diagnosis (from Pathology Verification):	Mesothelioma of pleura
Normal:	0%
Lesional:	0%
Tumor:	50%
Tumor Hypo/Acellular Stroma:	45%
Tumor Hypercellular Stroma:	5%
Necrosis:	0%
Pathology Verification notes from H&E review:	Tumor Stroma (Cellular): Desmoplastic reaction; Tumor Stroma (Hypo/Acellular): Fibrosis, Myxoid
CASE Diagnosis (from medical center path report):	Mesothelioma of pleura
Age:	63
Gender:	Not specified
Tumor Grade:	AJCC GX: Grade cannot be assessed

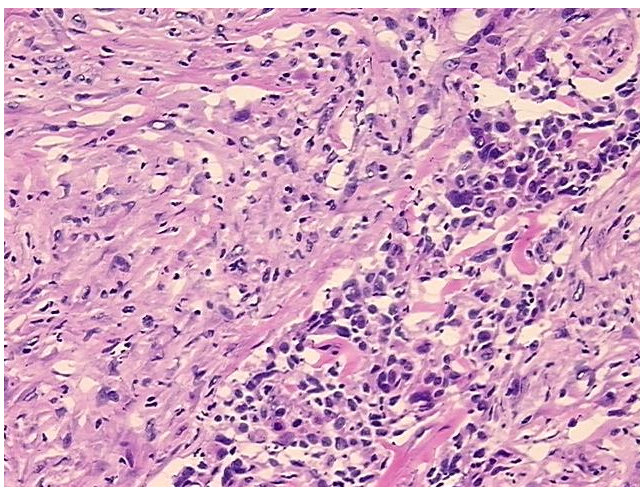


[View online »](#)

Minimum Stage Grouping:	I
T (Extent of Primary Tumor):	T1
N (Lymph node metastasis):	NX
M (Distant metastasis):	MX
Storage:	Store frozen tissue sections at -80°C.
Stability:	All frozen tissue sections are stable for 1 year from date of purchase if stored at -80°C without repeated freeze/thaws.

Product images:

4x Image



20x Image