

## Product datasheet for **CS618545**

### Frozen Tissue Sections, Kidney

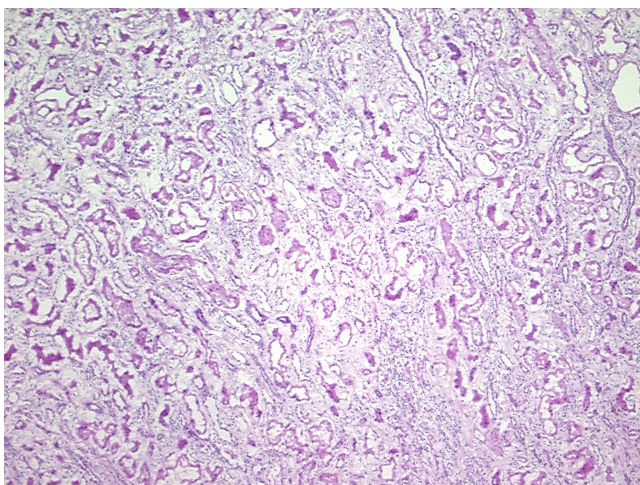
#### Product data:

Product Type:	Frozen Sections
Disease State:	Other Disease
Diagnosis Category:	Kidney Disease
Tissue:	Kidney
Frozen Sample ID:	FR0001675D
Case ID:	CU00000005328
Tissue of Origin:	Kidney
Site of Finding:	Kidney
Appearance:	L
Sample Diagnosis (from Pathology Verification):	Rejection of allograft of kidney
Normal:	0%
Lesional:	100%
Tumor:	0%
Tumor Hypo/Acellular Stroma:	0%
Tumor Hypercellular Stroma:	0%
Necrosis:	0%
Pathology Verification notes from H&E review:	75% renal cortex, 25% medulla; chronic active allograft rejection
CASE Diagnosis (from medical center path report):	Rejection of allograft of kidney
Age:	35
Gender:	Male
Storage:	Store frozen tissue sections at -80°C.

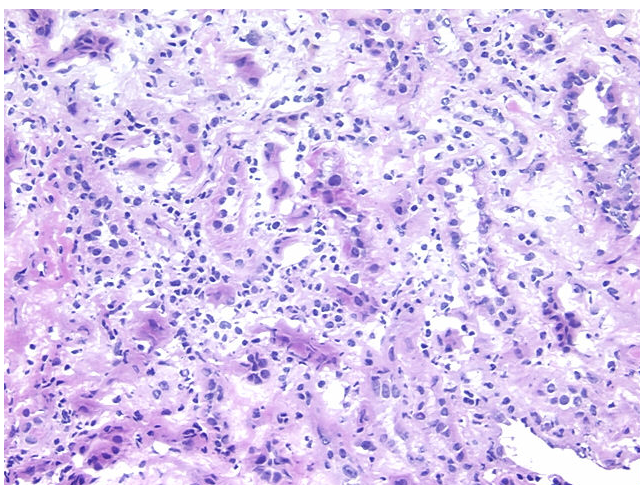

[View online »](#)

**Stability:** All frozen tissue sections are stable for 1 year from date of purchase if stored at -80°C without repeated freeze/thaws.

**Product images:**



4x Image



20x Image