

## Product datasheet for **CS618258**

### Frozen Tissue Sections, Colon

#### Product data:

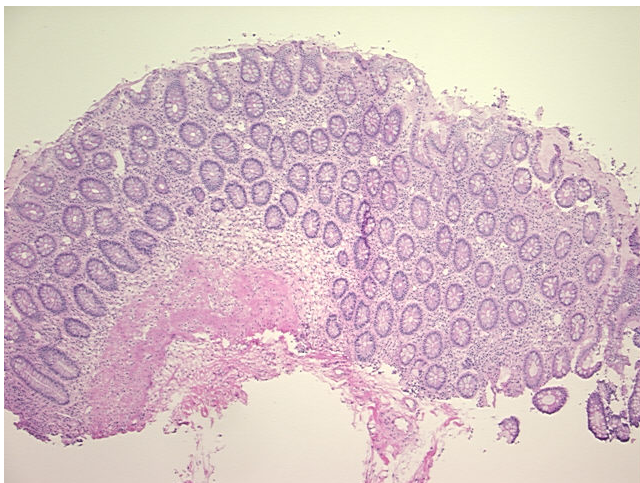
|   |   |
|---|---|
| Product Type:                                     | Frozen Sections   |
| Disease State:                                    | Other Disease   |
| Diagnosis Category:                               | Inflammatory Bowel Disease (IBD)  |
| Tissue:   | Colon   |
| Frozen Sample ID:                                 | FR5B336CAE  |
| Case ID:  | CU0000005309  |
| Tissue of Origin:                                 | Colon   |
| Site of Finding:                                  | Colon   |
| Appearance:                                       | L   |
| Sample Diagnosis (from Pathology Verification):   | Colitis, ulcerative, chronic inactive   |
| Normal:   | 0%  |
| Lesional:   | 100%  |
| Tumor:  | 0%  |
| Tumor Hypo/Acellular Stroma:                      | 0%  |
| Tumor Hypercellular Stroma:                       | 0%  |
| Necrosis:   | 0%  |
| Pathology Verification notes from H&E review:     | 25% mucosa, 75% submucosa and muscularis; Colon with chronic quiescent colitis; no granuloma seen |
| CASE Diagnosis (from medical center path report): | Colitis, ulcerative, chronic active   |
| Age:  | 57  |
| Gender:   | Female  |
| Storage:  | Store frozen tissue sections at -80°C.  |



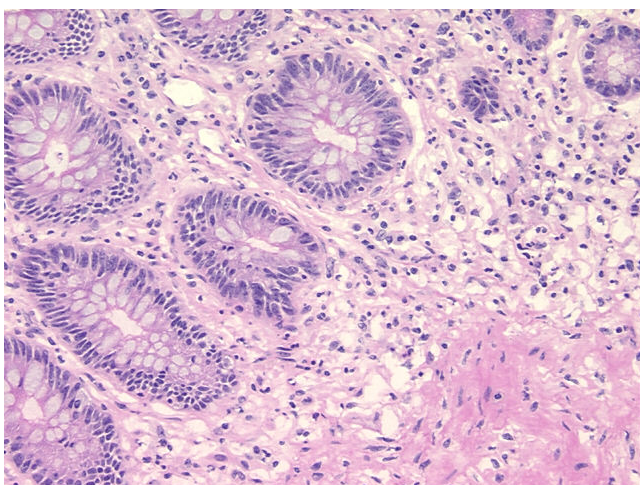
[View online »](#)

**Stability:** All frozen tissue sections are stable for 1 year from date of purchase if stored at -80°C without repeated freeze/thaws.

**Product images:**



4x Image



20x Image