

Product datasheet for **CS618060**

Frozen Tissue Sections, Maxillofacial sinus

Product data:

Product Type:	Frozen Sections
Disease State:	Cancer
Diagnosis Category:	Head and Neck Cancer
Tissue:	Maxillofacial sinus
Frozen Sample ID:	FR0001660D
Case ID:	CU0000005296
Tissue of Origin:	Maxillofacial sinus
Site of Finding:	Maxillofacial sinus
Appearance:	Tumor
Sample Diagnosis (from Pathology Verification):	Carcinoma of nasal sinus, squamous cell
Normal:	0%
Lesional:	0%
Tumor:	40%
Tumor Hypo/Acellular Stroma:	5%
Tumor Hypercellular Stroma:	0%
Necrosis:	55%
CASE Diagnosis (from medical center path report):	Carcinoma of nasal sinus, squamous cell
Age:	72
Gender:	Not specified
Tumor Grade:	AJCC G2: Moderately differentiated
Minimum Stage Grouping:	II



[View online »](#)

T (Extent of Primary Tumor): pT2

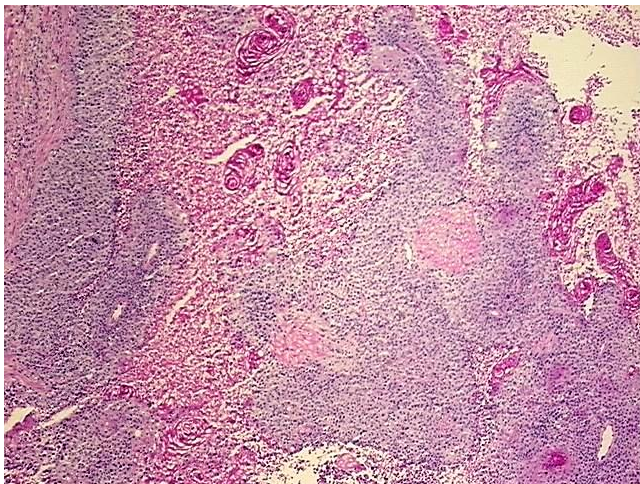
N (Lymph node metastasis): pNX

M (Distant metastasis): pMX

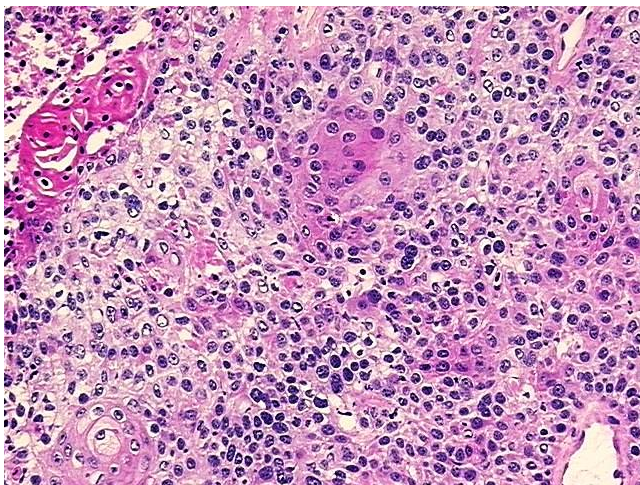
Storage: Store frozen tissue sections at -80°C.

Stability: All frozen tissue sections are stable for 1 year from date of purchase if stored at -80°C without repeated freeze/thaws.

Product images:



4x Image



20x Image