

Product datasheet for CS617992

Frozen Tissue Sections, Stomach

Product data:

Product Type:	Frozen Sections
Disease State:	Normal
Diagnosis Category:	Normal
Tissue:	Stomach
Frozen Sample ID:	FR5B335B2F
Case ID:	CU0000005290
Tissue of Origin:	Stomach
Site of Finding:	Stomach
Appearance:	R
Sample Diagnosis (from Pathology Verification):	Within normal limits
Normal:	100%
Lesional:	0%
Tumor:	0%
Tumor Hypo/Acellular Stroma:	0%
Tumor Hypercellular Stroma:	0%
Necrosis:	0%
Pathology Verification notes from H&E review:	40% mucosa, 60% submucosa and muscle.
CASE Diagnosis (from medical center path report):	Adenocarcinoma of gastroesophageal junction
Age:	43
Gender:	Female
Tumor Grade:	AJCC G3: Poorly differentiated



[View online »](#)

Minimum Stage Grouping: III

T (Extent of Primary Tumor): T3

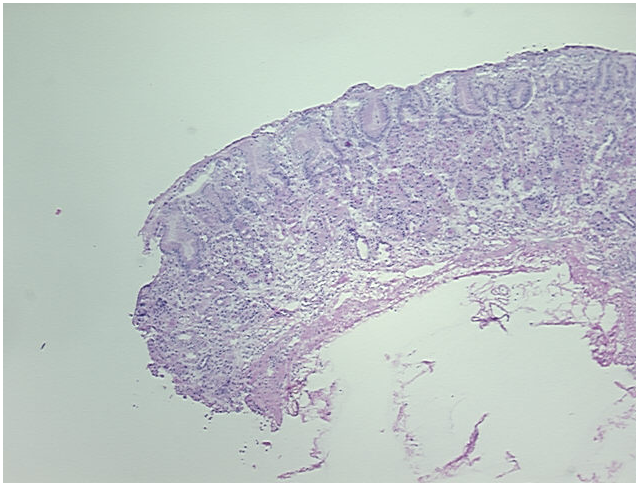
N (Lymph node metastasis): N1

M (Distant metastasis): MX

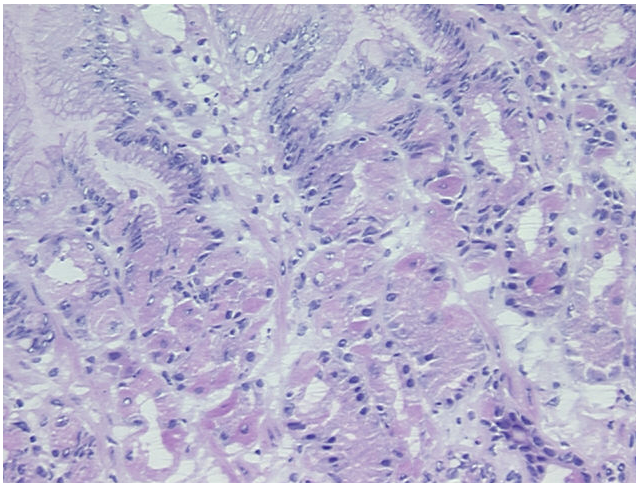
Storage: Store frozen tissue sections at -80°C.

Stability: All frozen tissue sections are stable for 1 year from date of purchase if stored at -80°C without repeated freeze/thaws.

Product images:



4x Image



20x Image