

Product datasheet for **CS617669**

Frozen Tissue Sections, Myometrium

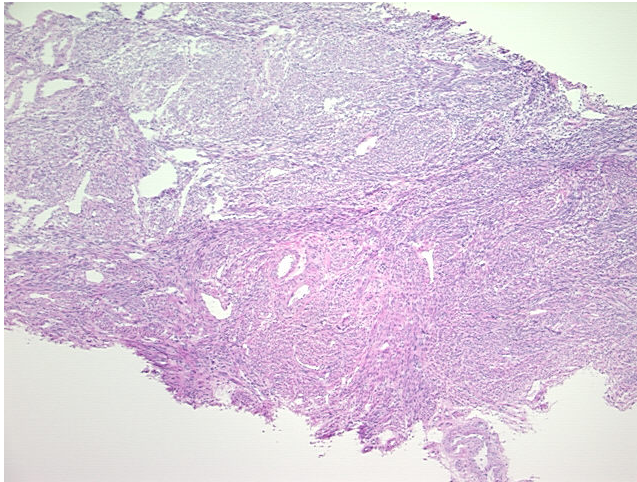
Product data:

| | |
|---|------------------------------------|
| Product Type: | Frozen Sections |
| Disease State: | Normal |
| Diagnosis Category: | Normal |
| Tissue: | Myometrium |
| Frozen Sample ID: | FR65EDEA53 |
| Case ID: | CU0000005262 |
| Tissue of Origin: | Myometrium |
| Site of Finding: | Myometrium |
| Appearance: | R |
| Sample Diagnosis (from Pathology Verification): | Within normal limits |
| Normal: | 100% |
| Lesional: | 0% |
| Tumor: | 0% |
| Tumor Hypo/Acellular Stroma: | 0% |
| Tumor Hypercellular Stroma: | 0% |
| Necrosis: | 0% |
| Pathology Verification notes from H&E review: | 100% myometrium |
| CASE Diagnosis (from medical center path report): | Carcinoma of ovary, endometrioid |
| Age: | 58 |
| Gender: | Female |
| Tumor Grade: | FIGO G2: Moderately differentiated |

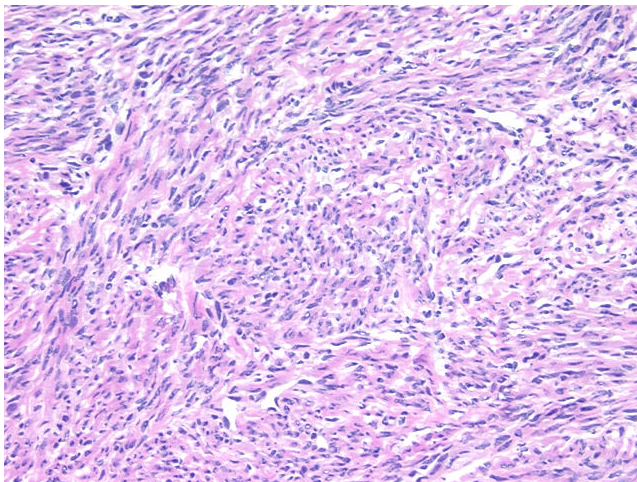


[View online »](#)

| | |
|------------------------------|--|
| Minimum Stage Grouping: | IC |
| T (Extent of Primary Tumor): | T1c |
| N (Lymph node metastasis): | NX |
| M (Distant metastasis): | MX |
| Diagnostic Test Results: | Cytokeratin 7 ~ CK7 ! by IHC,Positive; Cytokeratin 20 ~ CK20 ! by IHC,Negative |
| Storage: | Store frozen tissue sections at -80°C. |
| Stability: | All frozen tissue sections are stable for 1 year from date of purchase if stored at -80°C without repeated freeze/thaws. |

Product images:

4x Image



20x Image