

Product datasheet for CS617665

Frozen Tissue Sections, Myometrium

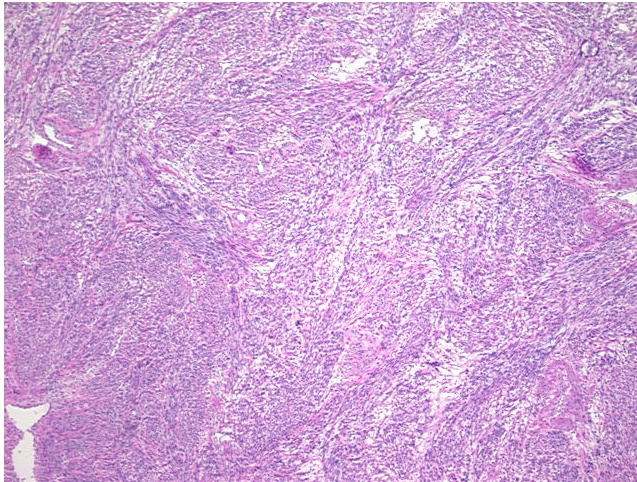
Product data:

Product Type:	Frozen Sections
Disease State:	Normal
Diagnosis Category:	Normal
Tissue:	Myometrium
Frozen Sample ID:	FR65EDEA4E
Case ID:	CU0000005262
Tissue of Origin:	Myometrium
Site of Finding:	Myometrium
Appearance:	R
Sample Diagnosis (from Pathology Verification):	Within normal limits
Normal:	100%
Lesional:	0%
Tumor:	0%
Tumor Hypo/Acellular Stroma:	0%
Tumor Hypercellular Stroma:	0%
Necrosis:	0%
Pathology Verification notes from H&E review:	100% myometrium
CASE Diagnosis (from medical center path report):	Carcinoma of ovary, endometrioid
Age:	58
Gender:	Female
Tumor Grade:	FIGO G2: Moderately differentiated

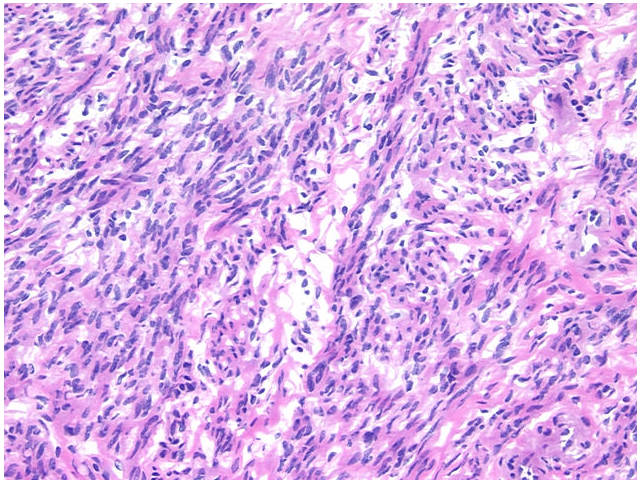


[View online »](#)

Minimum Stage Grouping:	IC
T (Extent of Primary Tumor):	T1c
N (Lymph node metastasis):	NX
M (Distant metastasis):	MX
Diagnostic Test Results:	Cytokeratin 7 ~ CK7 ! by IHC,Positive; Cytokeratin 20 ~ CK20 ! by IHC,Negative
Storage:	Store frozen tissue sections at -80°C.
Stability:	All frozen tissue sections are stable for 1 year from date of purchase if stored at -80°C without repeated freeze/thaws.

Product images:

4x Image



20x Image