

Product datasheet for **CS617597**

Frozen Tissue Sections, Uterus

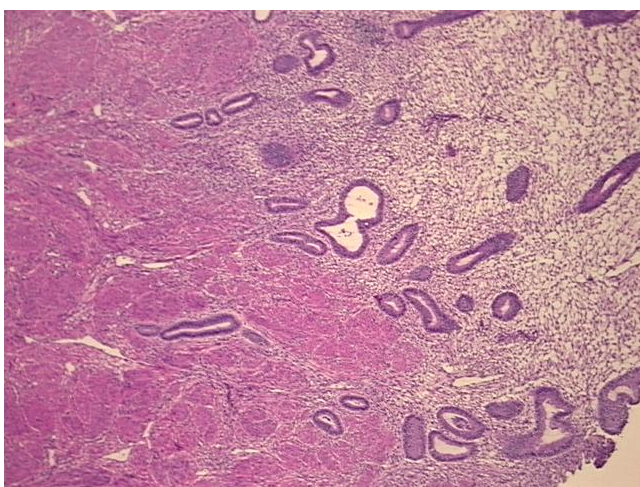
Product data:

| | |
|---|--|
| Product Type: | Frozen Sections |
| Disease State: | Other Disease |
| Diagnosis Category: | Adenosis |
| Tissue: | Myometrium |
| Frozen Sample ID: | FR71B9C55B |
| Case ID: | CU0000005261 |
| Tissue of Origin: | Uterus |
| Site of Finding: | Uterus |
| Appearance: | L |
| Sample Diagnosis (from Pathology Verification): | Adenomyosis of myometrium |
| Normal: | 90% |
| Lesional: | 10% |
| Tumor: | 0% |
| Tumor Hypo/Acellular Stroma: | 0% |
| Tumor Hypercellular Stroma: | 0% |
| Necrosis: | 0% |
| Pathology Verification notes from H&E review: | Non Tumor Structures: 15% Glands, 25% Stroma, 60% Myometrium; Other Features/Comments: proliferative phase endometrium |
| CASE Diagnosis (from medical center path report): | Leiomyosarcoma |
| Age: | 48 |
| Gender: | Female |
| Tumor Grade: | FIGO G3: Poorly differentiated |

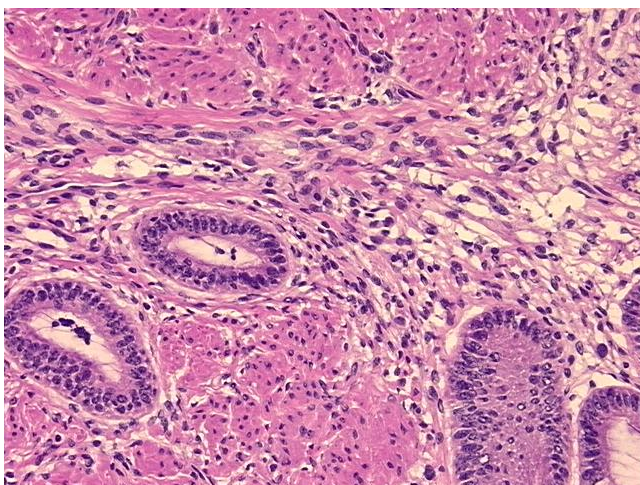


[View online »](#)

| | |
|------------------------------|--|
| Minimum Stage Grouping: | I |
| T (Extent of Primary Tumor): | T1 |
| N (Lymph node metastasis): | N0 |
| M (Distant metastasis): | MX |
| Storage: | Store frozen tissue sections at -80°C. |
| Stability: | All frozen tissue sections are stable for 1 year from date of purchase if stored at -80°C without repeated freeze/thaws. |

Product images:

4x Image



20x Image