

## Product datasheet for **CS617351**

### Frozen Tissue Sections, Skin

#### Product data:

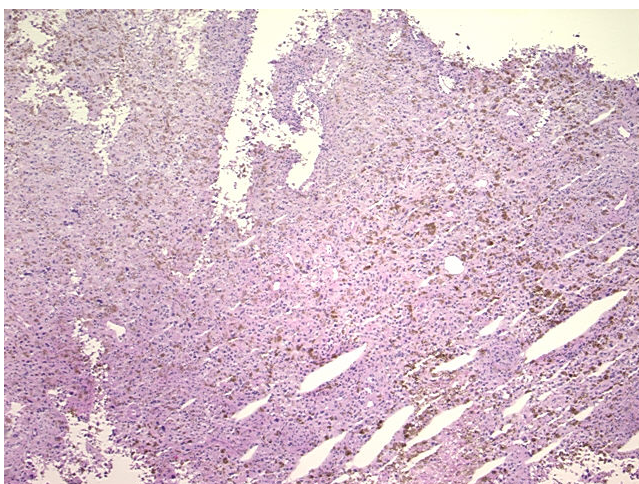
Product Type:	Frozen Sections
Disease State:	Cancer
Diagnosis Category:	Melanoma
Tissue:	Skin
Frozen Sample ID:	FR000161EE
Case ID:	CU0000005245
Tissue of Origin:	Skin
Site of Finding:	Lung
Appearance:	T
Sample Diagnosis (from Pathology Verification):	Malignant melanoma, metastatic
Normal:	0%
Lesional:	0%
Tumor:	90%
Tumor Hypo/Acellular Stroma:	0%
Tumor Hypercellular Stroma:	5%
Necrosis:	5%
CASE Diagnosis (from medical center path report):	Malignant melanoma, metastatic
Age:	55
Gender:	Not specified
Tumor Grade:	Not Reported
Minimum Stage Grouping:	IV



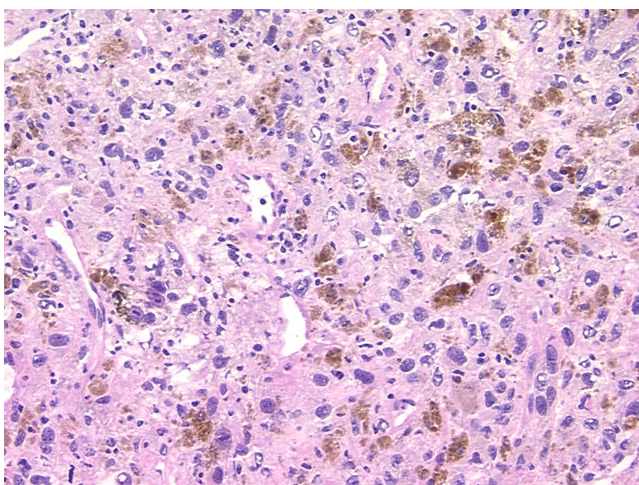
[View online »](#)

T (Extent of Primary Tumor):	TX
N (Lymph node metastasis):	NX
M (Distant metastasis):	M1c
Diagnostic Test Results:	GMS ~ Grocott methenamine silver stain,Negative; Acid-fast bacteria ~ AFB ~ Ziehl-Neelsen acid fast,Negative; HMB45 melanoma antigen ~ GP100 ! by IHC,Positive; S100 protein,Positive; Cytokeratin AE1/AE3 ~ AE1/AE3 ! by IHC,Positive
Storage:	Store frozen tissue sections at -80°C.
Stability:	All frozen tissue sections are stable for 1 year from date of purchase if stored at -80°C without repeated freeze/thaws.

### Product images:



4x Image



20x Image