

Product datasheet for **CS617066**

Frozen Tissue Sections, Colon: right

Product data:

Product Type:	Frozen Sections
Disease State:	Cancer
Diagnosis Category:	Colorectal Cancer
Tissue:	Colon
Frozen Sample ID:	FR5B335B11
Case ID:	CU0000005223
Tissue of Origin:	Colon: right
Site of Finding:	Colon: right
Appearance:	T
Sample Diagnosis (from Pathology Verification):	Adenocarcinoma of colon
Normal:	55%
Lesional:	0%
Tumor:	35%
Tumor Hypo/Acellular Stroma:	0%
Tumor Hypercellular Stroma:	10%
Necrosis:	0%
CASE Diagnosis (from medical center path report):	Adenocarcinoma of colon
Age:	89
Gender:	Not specified
Tumor Grade:	AJCC G1: Well differentiated
Minimum Stage Grouping:	I


[View online »](#)

T (Extent of Primary Tumor): T1

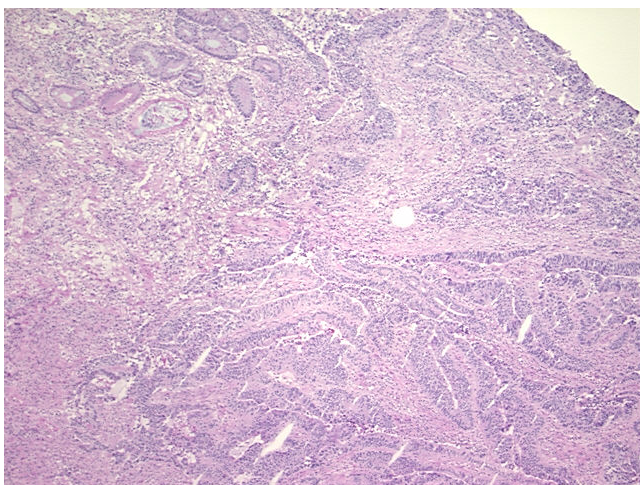
N (Lymph node metastasis): N0

M (Distant metastasis): MX

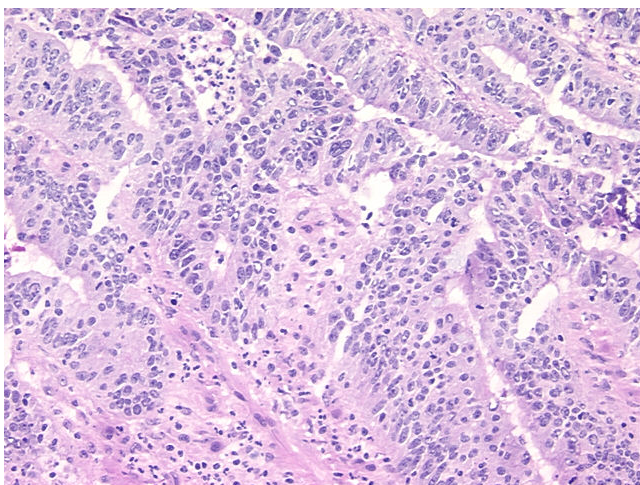
Storage: Store frozen tissue sections at -80°C.

Stability: All frozen tissue sections are stable for 1 year from date of purchase if stored at -80°C without repeated freeze/thaws.

Product images:



4x Image



20x Image