

## Product datasheet for **CS616619**

### Frozen Tissue Sections, Ovary: left

#### Product data:

Product Type:	Frozen Sections
Disease State:	Other Disease
Diagnosis Category:	Borderline Ovarian Tumor
Tissue:	Ovary
Frozen Sample ID:	FR00019DF1
Case ID:	CU00000005188
Tissue of Origin:	Ovary: left
Site of Finding:	Ovary: left
Appearance:	T
Sample Diagnosis (from Pathology Verification):	Tumor of ovary, mucinous, borderline
Normal:	0%
Lesional:	0%
Tumor:	10%
Tumor Hypo/Acellular Stroma:	45%
Tumor Hypercellular Stroma:	45%
Necrosis:	0%
Pathology Verification notes from H&E review:	acellular stroma: mucin



**CASE Diagnosis (from medical center path report):** Tumor of ovary, mucinous, borderline

**Age:** 41

**Gender:** Female

**Tumor Grade:** AJCC GB: Borderline malignancy

**Minimum Stage Grouping:** IA

**T (Extent of Primary Tumor):** T1a

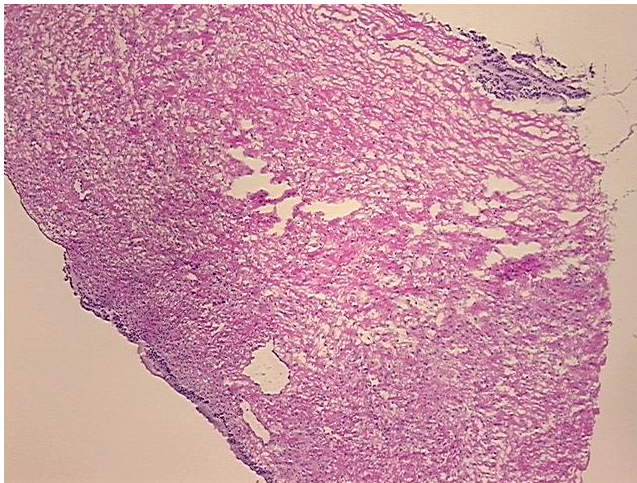
**N (Lymph node metastasis):** NX

**M (Distant metastasis):** MX

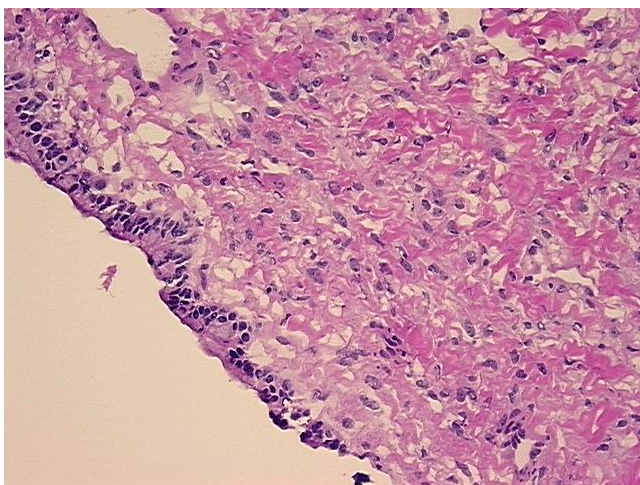
**Storage:** Store frozen tissue sections at -80°C.

**Stability:** All frozen tissue sections are stable for 1 year from date of purchase if stored at -80°C without repeated freeze/thaws.

**Product images:**



4x Image



20x Image