

Product datasheet for CS616608

Frozen Tissue Sections, Fallopian tube

Product data:

| | |
|---|--|
| Product Type: | Frozen Sections |
| Disease State: | Normal |
| Diagnosis Category: | Normal |
| Tissue: | Fallopian tube |
| Frozen Sample ID: | FR5B337E87 |
| Case ID: | CU0000005186 |
| Tissue of Origin: | Fallopian tube |
| Site of Finding: | Fallopian tube |
| Appearance: | R |
| Sample Diagnosis (from Pathology Verification): | Within normal limits |
| Normal: | 100% |
| Lesional: | 0% |
| Tumor: | 0% |
| Tumor Hypo/Acellular Stroma: | 0% |
| Tumor Hypercellular Stroma: | 0% |
| Necrosis: | 0% |
| Pathology Verification notes from H&E review: | Non Tumor Structures: 20% Mucosa, 80% Muscle |
| CASE Diagnosis (from medical center path report): | Carcinoma of ovary, endometrioid |
| Age: | 31 |
| Gender: | Female |
| Tumor Grade: | FIGO G2: Moderately differentiated |



[View online »](#)

Minimum Stage Grouping: IIIC

T (Extent of Primary Tumor): T1c

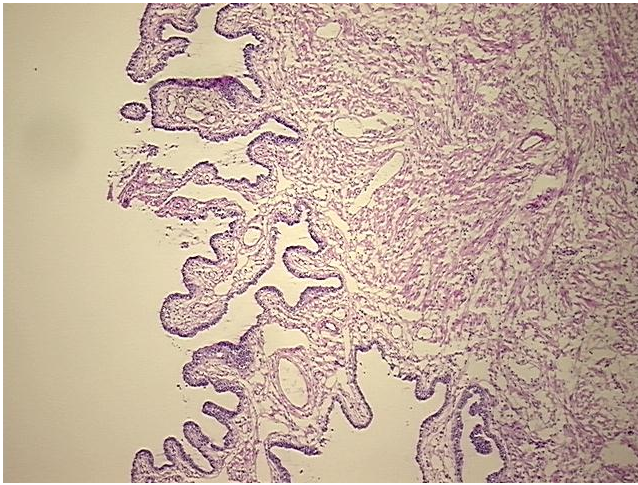
N (Lymph node metastasis): N1

M (Distant metastasis): MX

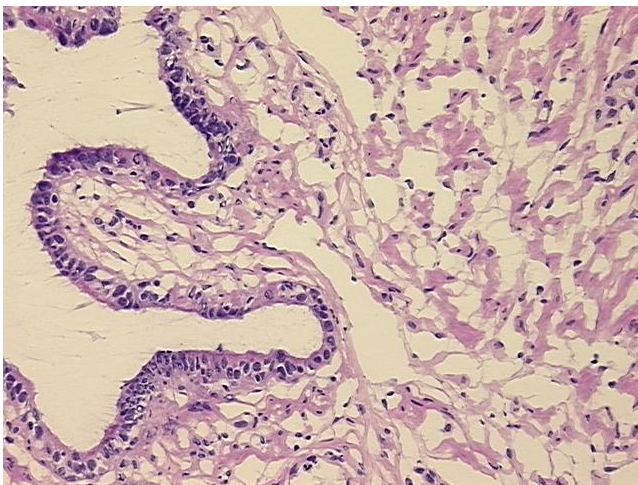
Storage: Store frozen tissue sections at -80°C.

Stability: All frozen tissue sections are stable for 1 year from date of purchase if stored at -80°C without repeated freeze/thaws.

Product images:



4x Image



20x Image