

## Product datasheet for **CS615851**

### Frozen Tissue Sections, Colon

#### Product data:

Product Type:	Frozen Sections
Disease State:	Cancer
Diagnosis Category:	Colorectal Cancer
Tissue:	Colon
Frozen Sample ID:	FR00017840
Case ID:	CU00000005132
Tissue of Origin:	Colon
Site of Finding:	Liver
Appearance:	T
Sample Diagnosis (from Pathology Verification):	Adenocarcinoma of colon, metastatic
Normal:	15%
Lesional:	0%
Tumor:	55%
Tumor Hypo/Acellular Stroma:	0%
Tumor Hypercellular Stroma:	15%
Necrosis:	15%
CASE Diagnosis (from medical center path report):	Adenocarcinoma of colon, metastatic
Age:	34
Gender:	Female
Tumor Grade:	Not Reported
Minimum Stage Grouping:	IV


[View online »](#)

**T (Extent of Primary Tumor):** TX

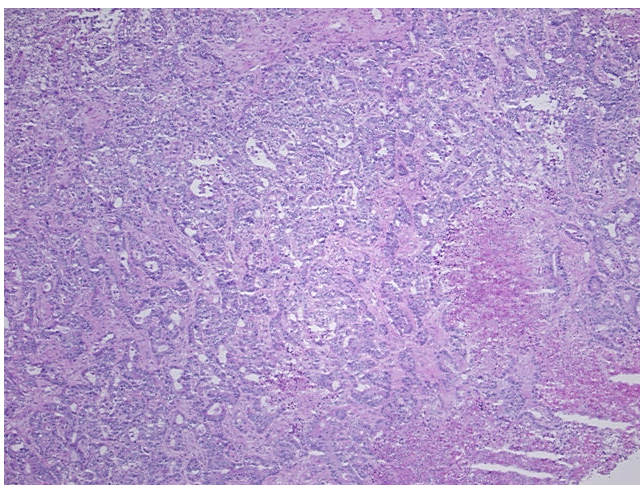
**N (Lymph node metastasis):** NX

**M (Distant metastasis):** M1

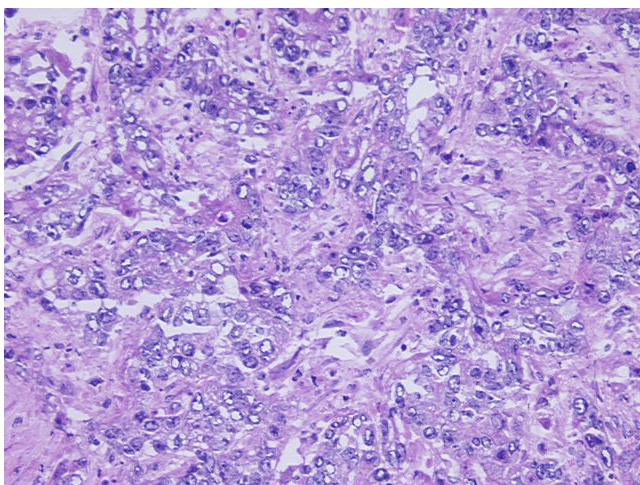
**Storage:** Store frozen tissue sections at -80°C.

**Stability:** All frozen tissue sections are stable for 1 year from date of purchase if stored at -80°C without repeated freeze/thaws.

### Product images:



4x Image



20x Image