

## Product datasheet for **CS615674**

### Frozen Tissue Sections, Small intestine

#### Product data:

<b>Product Type:</b>	Frozen Sections
<b>Disease State:</b>	Normal
<b>Diagnosis Category:</b>	Normal
<b>Tissue:</b>	Small intestine
<b>Frozen Sample ID:</b>	FR00017559
<b>Case ID:</b>	CU0000005108
<b>Tissue of Origin:</b>	Small intestine
<b>Site of Finding:</b>	Small intestine
<b>Appearance:</b>	R
<b>Sample Diagnosis (from Pathology Verification):</b>	Within normal limits
<b>Normal:</b>	100%
<b>Lesional:</b>	0%
<b>Tumor:</b>	0%
<b>Tumor Hypo/Acellular Stroma:</b>	0%
<b>Tumor Hypercellular Stroma:</b>	0%
<b>Necrosis:</b>	0%
<b>Pathology Verification notes from H&amp;E review:</b>	Non Tumor Structures: 80% Mucosa, 10% Submucosa, 10% Muscle



[View online »](#)

**CASE Diagnosis (from medical center path report):** Malignant melanoma, metastatic

**Age:** 56

**Gender:** Male

**Tumor Grade:** Not Reported

**Minimum Stage Grouping:** IV

**T (Extent of Primary Tumor):** TX

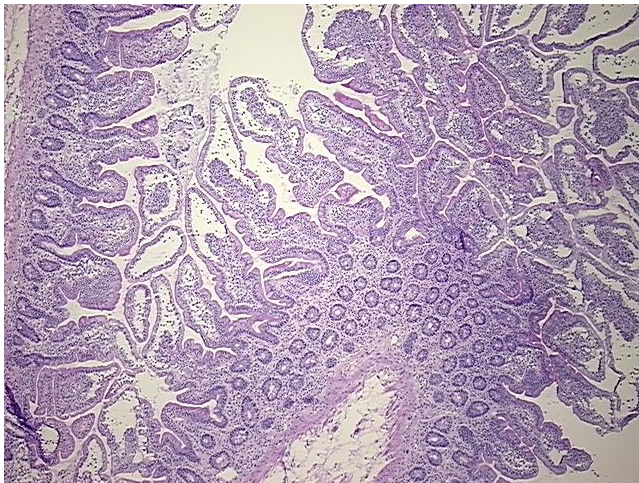
**N (Lymph node metastasis):** NX

**M (Distant metastasis):** M1b

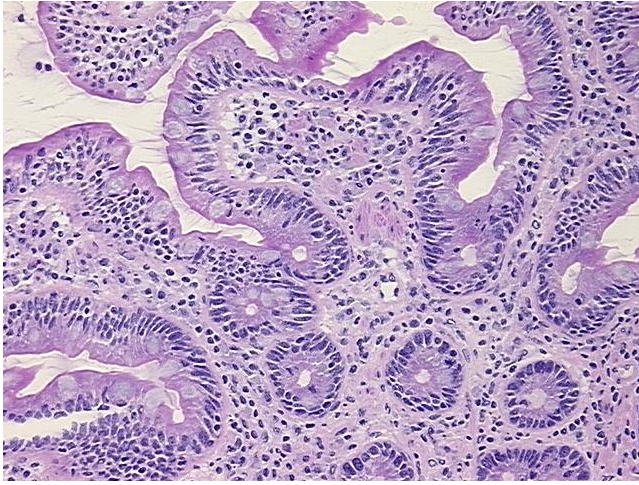
**Storage:** Store frozen tissue sections at  $-80^{\circ}\text{C}$ .

**Stability:** All frozen tissue sections are stable for 1 year from date of purchase if stored at  $-80^{\circ}\text{C}$  without repeated freeze/thaws.

### Product images:



4x Image



20x Image