

## Product datasheet for **CS615637**

### Frozen Tissue Sections, Lymphoid tissue

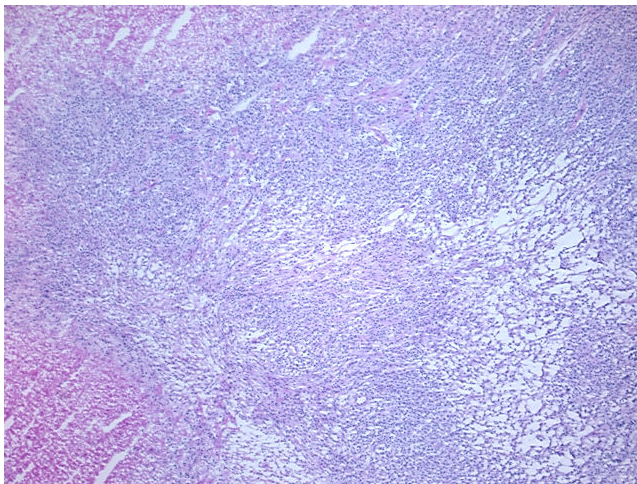
#### Product data:

Product Type:	Frozen Sections
Disease State:	Cancer
Diagnosis Category:	Lymphoma
Tissue:	Lymphoid tissue
Frozen Sample ID:	FR00017543
Case ID:	CU0000005107
Tissue of Origin:	Lymphoid tissue
Site of Finding:	Spleen
Appearance:	T
Sample Diagnosis (from Pathology Verification):	Lymphoma, large B-cell, diffuse
Normal:	0%
Lesional:	0%
Tumor:	50%
Tumor Hypo/Acellular Stroma:	10%
Tumor Hypercellular Stroma:	0%
Necrosis:	40%
CASE Diagnosis (from medical center path report):	Lymphoma, large B-cell, diffuse
Age:	61
Gender:	Male
Tumor Grade:	Not Reported
Minimum Stage Grouping:	IV

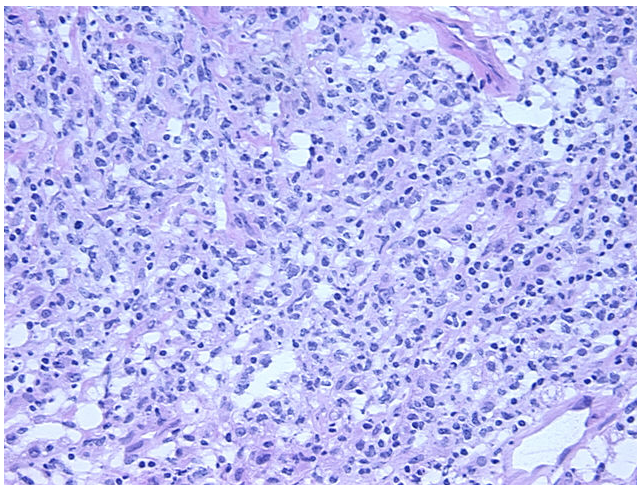


[View online »](#)

<b>T (Extent of Primary Tumor):</b>	Not applicable
<b>N (Lymph node metastasis):</b>	Not applicable
<b>M (Distant metastasis):</b>	Not applicable
<b>Diagnostic Test Results:</b>	CD3 ~ Leu4 ~ UCHT1 ! by IHC,Negative; Kappa light chain ! by IHC,Positive; CD5 ~ Leu1 ! by IHC,Negative; CD20 ~ B1 ~ Leu16 ! by IHC,Positive
<b>Storage:</b>	Store frozen tissue sections at -80°C.
<b>Stability:</b>	All frozen tissue sections are stable for 1 year from date of purchase if stored at -80°C without repeated freeze/thaws.

**Product images:**


4x Image



20x Image