

Product datasheet for **CS615552**

Frozen Tissue Sections, Ovary

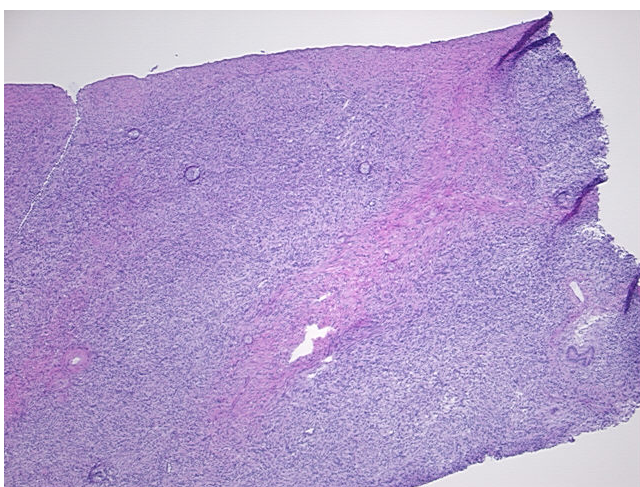
Product data:

| | |
|---|---------------------------------------|
| Product Type: | Frozen Sections |
| Disease State: | Other Disease |
| Diagnosis Category: | Cysts |
| Tissue: | Ovary |
| Frozen Sample ID: | FR0001748B |
| Case ID: | CU0000005098 |
| Tissue of Origin: | Ovary |
| Site of Finding: | Ovary |
| Appearance: | L |
| Sample Diagnosis (from Pathology Verification): | Cyst of ovary, epithelial inclusion |
| Normal: | 99% |
| Lesional: | 1% |
| Tumor: | 0% |
| Tumor Hypo/Acellular Stroma: | 0% |
| Tumor Hypercellular Stroma: | 0% |
| Necrosis: | 0% |
| Pathology Verification notes from H&E review: | 89% ovarian stroma, 10% hilar vessels |
| CASE Diagnosis (from medical center path report): | Leiomyoma of paravaginal tissue |
| Age: | 71 |
| Gender: | Female |
| Tumor Grade: | Not Reported |

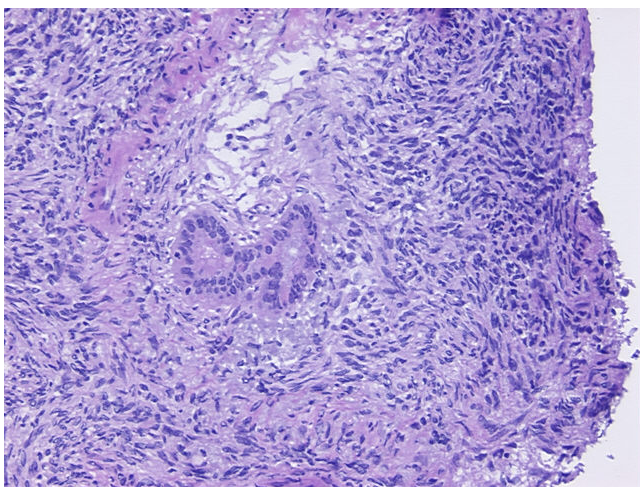


[View online »](#)

| | |
|------------------------------|--|
| Minimum Stage Grouping: | Not Reported |
| T (Extent of Primary Tumor): | Not Reported |
| N (Lymph node metastasis): | Not Reported |
| M (Distant metastasis): | Not Reported |
| Storage: | Store frozen tissue sections at -80°C. |
| Stability: | All frozen tissue sections are stable for 1 year from date of purchase if stored at -80°C without repeated freeze/thaws. |

Product images:

4x Image



20x Image