

## Product datasheet for **CS615536**

### Frozen Tissue Sections, Small intestine

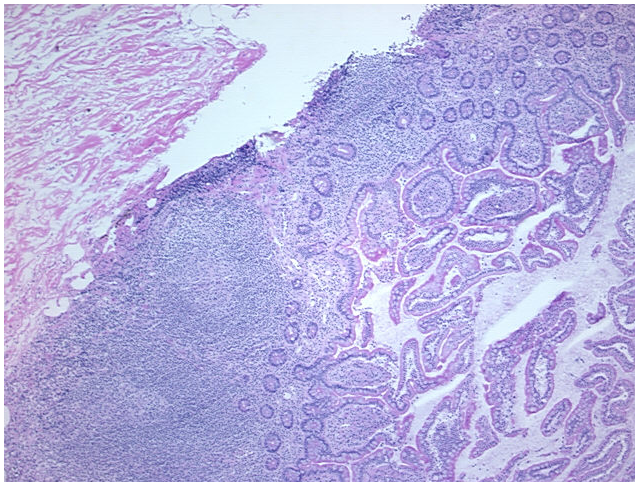
#### Product data:

|   |  |
|---|--|
| Product Type:                                     | Frozen Sections  |
| Disease State:                                    | Normal   |
| Diagnosis Category:                               | Normal   |
| Tissue:   | Small intestine  |
| Frozen Sample ID:                                 | FR5B33551B   |
| Case ID:  | CU0000005096   |
| Tissue of Origin:                                 | Small intestine  |
| Site of Finding:                                  | Small intestine  |
| Appearance:                                       | R  |
| Sample Diagnosis (from Pathology Verification):   | Within normal limits   |
| Normal:   | 100%   |
| Lesional:   | 0%   |
| Tumor:  | 0%   |
| Tumor Hypo/Acellular Stroma:                      | 0%   |
| Tumor Hypercellular Stroma:                       | 0%   |
| Necrosis:   | 0%   |
| Pathology Verification notes from H&E review:     | 65% mucosa, 15% submucosa, 20% muscle; prominent lymphoid aggregates present |
| CASE Diagnosis (from medical center path report): | Adenocarcinoma of colon  |
| Age:  | 66   |
| Gender:   | Male   |
| Tumor Grade:                                      | AJCC G2: Moderately differentiated   |

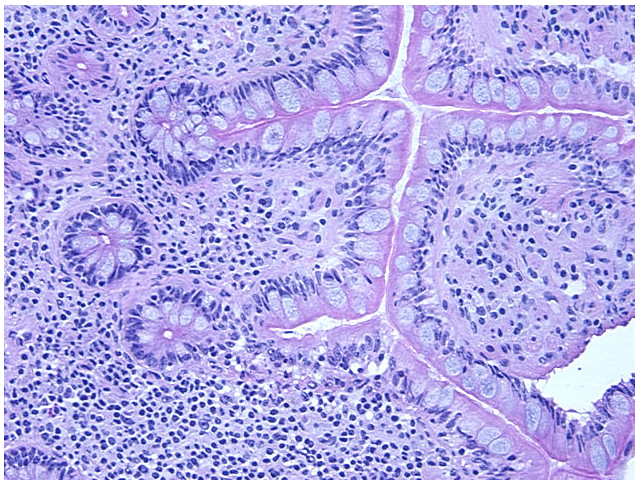

[View online »](#)

|                              |  |
|------------------------------|--|
| Minimum Stage Grouping:      | I  |
| T (Extent of Primary Tumor): | T2   |
| N (Lymph node metastasis):   | N0   |
| M (Distant metastasis):      | MX   |
| Diagnostic Test Results:     | Proliferation index ~ PI,High  |
| Storage:                     | Store frozen tissue sections at -80°C.   |
| Stability:                   | All frozen tissue sections are stable for 1 year from date of purchase if stored at -80°C without repeated freeze/thaws. |

## Product images:



4x Image



20x Image