

Product datasheet for **CS614465**

Frozen Tissue Sections, Ovary: left

Product data:

Product Type:	Frozen Sections
Disease State:	Other Disease
Diagnosis Category:	Teratoma
Tissue:	Ovary
Frozen Sample ID:	FR5B31F8BE
Case ID:	CU0000005012
Tissue of Origin:	Ovary: left
Site of Finding:	Omentum
Appearance:	T
Sample Diagnosis (from Pathology Verification):	Teratoma of ovary, immature, metastatic
Normal:	10%
Lesional:	0%
Tumor:	80%
Tumor Hypo/Acellular Stroma:	0%
Tumor Hypercellular Stroma:	10%
Necrosis:	0%
CASE Diagnosis (from medical center path report):	Teratoma of ovary, immature
Age:	27
Gender:	Female
Tumor Grade:	FIGO G3: Poorly differentiated
Minimum Stage Grouping:	IIIA



[View online »](#)

T (Extent of Primary Tumor): T3a

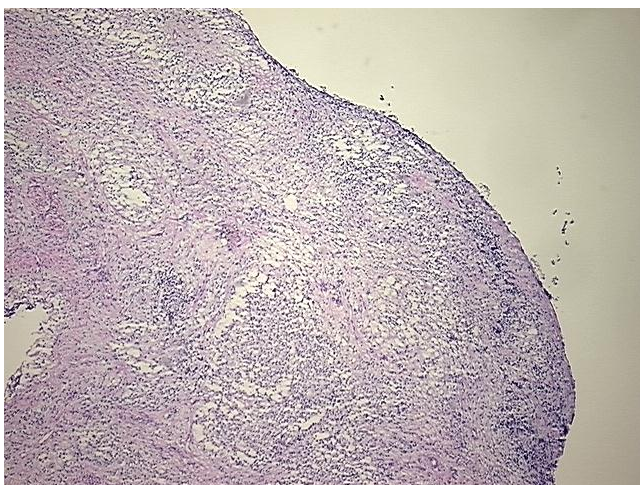
N (Lymph node metastasis): NX

M (Distant metastasis): MX

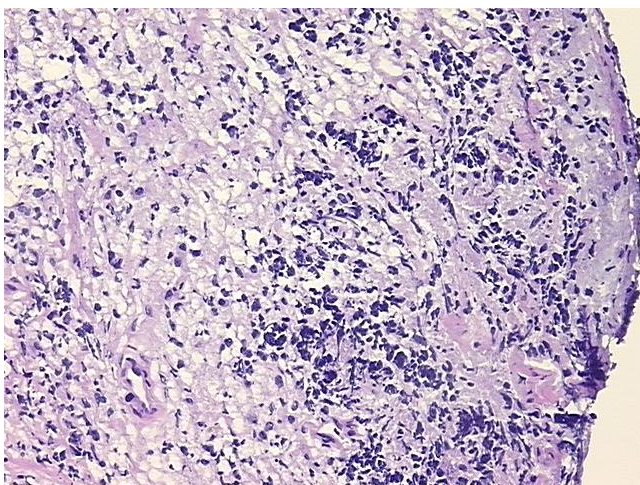
Storage: Store frozen tissue sections at -80°C.

Stability: All frozen tissue sections are stable for 1 year from date of purchase if stored at -80°C without repeated freeze/thaws.

Product images:



4x Image



20x Image