

Product datasheet for **CS614293**

Frozen Tissue Sections, Endometriotic tissue

Product data:

Product Type:	Frozen Sections
Disease State:	Other Disease
Diagnosis Category:	Endometriosis
Tissue:	Endometriotic tissue
Frozen Sample ID:	FR0000822C
Case ID:	CU0000002009
Tissue of Origin:	Endometriotic tissue
Site of Finding:	Ovary: left
Appearance:	L
Sample Diagnosis (from Pathology Verification):	Endometriosis
Normal:	90%
Lesional:	10%
Tumor:	0%
Tumor Hypo/Acellular Stroma:	0%
Tumor Hypercellular Stroma:	0%
Necrosis:	0%
Pathology Verification notes from H&E review:	Normal: 80% ovarian stroma, 10% hilar vessels; attenuated epithelial and stromal lining of the endometriotic cyst with pigmented histiocytes (psuedoxanthoma cells) in stroma consistent with endometriotic cyst (endometriosis) present
CASE Diagnosis (from medical center path report):	Endometriosis
Age:	36
Gender:	Female

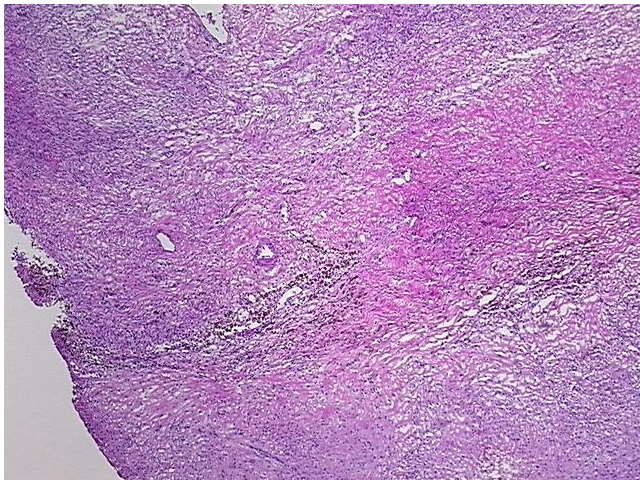


[View online »](#)

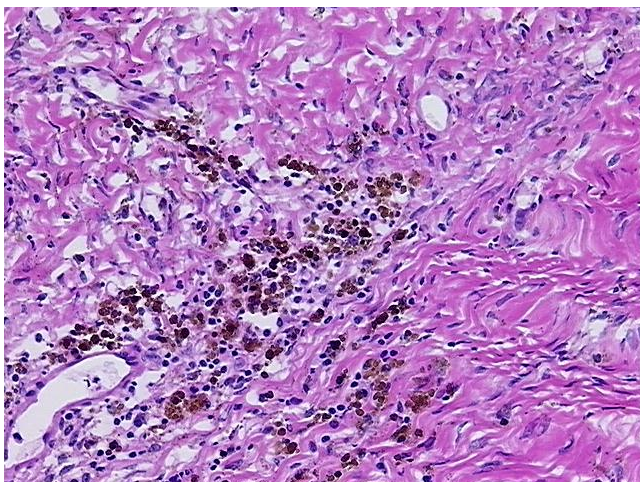
Storage: Store frozen tissue sections at -80°C.

Stability: All frozen tissue sections are stable for 1 year from date of purchase if stored at -80°C without repeated freeze/thaws.

Product images:



4x Image



20x Image