

## Product datasheet for **CS613652**

### Frozen Tissue Sections, Ovary: left

#### Product data:

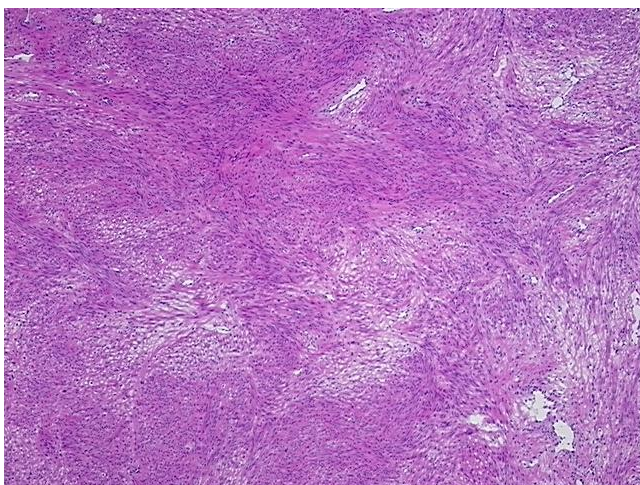
|   |   |
|---|---|
| Product Type:                                     | Frozen Sections                             |
| Disease State:                                    | Other Disease                               |
| Diagnosis Category:                               | Uterine Fibroids                            |
| Tissue:   | Myometrium                                  |
| Frozen Sample ID:                                 | FR00007CB4                                  |
| Case ID:  | CU0000001938                                |
| Tissue of Origin:                                 | Ovary: left                                 |
| Site of Finding:                                  | Ovary: left                                 |
| Appearance:                                       | T   |
| Sample Diagnosis (from Pathology Verification):   | Leiomyoma of ovary                          |
| Normal:   | 0%  |
| Lesional:   | 0%  |
| Tumor:  | 100%  |
| Tumor Hypo/Acellular Stroma:                      | 0%  |
| Tumor Hypercellular Stroma:                       | 0%  |
| Necrosis:   | 0%  |
| Pathology Verification notes from H&E review:     | 75% smooth muscle, 25% fibrovascular stroma |
| CASE Diagnosis (from medical center path report): | Leiomyoma of ovary                          |
| Age:  | 36  |
| Gender:   | Female                                      |
| Storage:  | Store frozen tissue sections at -80°C.      |



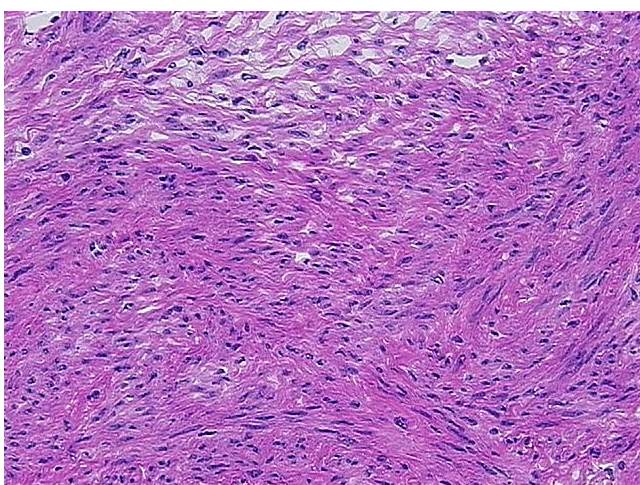
[View online »](#)

**Stability:** All frozen tissue sections are stable for 1 year from date of purchase if stored at -80°C without repeated freeze/thaws.

**Product images:**



4x Image



20x Image