

Product datasheet for **CS613651**

Frozen Tissue Sections, Ovary: left

Product data:

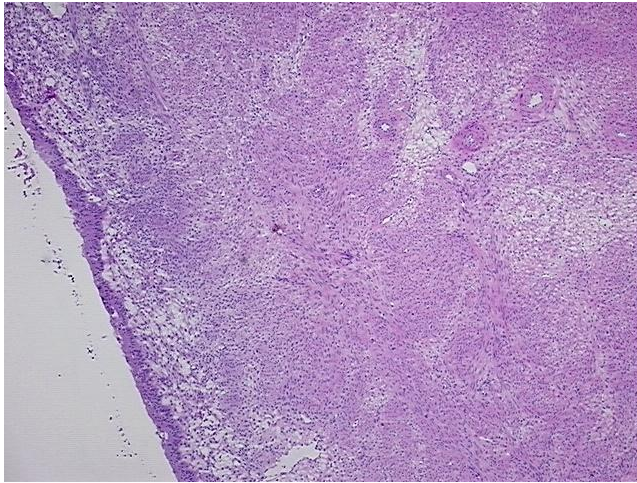
Product Type:	Frozen Sections
Disease State:	Other Disease
Diagnosis Category:	Uterine Fibroids
Tissue:	Myometrium
Frozen Sample ID:	FR00007CB3
Case ID:	CU0000001938
Tissue of Origin:	Ovary: left
Site of Finding:	Ovary: left
Appearance:	T
Sample Diagnosis (from Pathology Verification):	Leiomyoma of ovary
Normal:	0%
Lesional:	20%
Tumor:	80%
Tumor Hypo/Acellular Stroma:	0%
Tumor Hypercellular Stroma:	0%
Necrosis:	0%
Pathology Verification notes from H&E review:	Benign tumor: 80% leiomyoma of ovary; lesion: endometriosis: 15% epithelium, 5% stroma
CASE Diagnosis (from medical center path report):	Leiomyoma of ovary
Age:	36
Gender:	Female
Storage:	Store frozen tissue sections at -80°C.



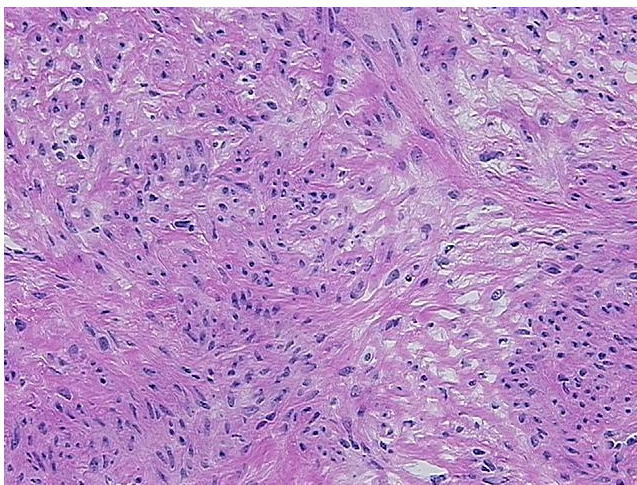
[View online »](#)

Stability: All frozen tissue sections are stable for 1 year from date of purchase if stored at -80°C without repeated freeze/thaws.

Product images:



4x Image



20x Image