

## Product datasheet for **CS613616**

### Frozen Tissue Sections, Neural tissue

#### Product data:

Product Type:	Frozen Sections
Disease State:	Other Disease
Diagnosis Category:	Benign Tumors
Tissue:	Neural tissue
Frozen Sample ID:	FR00007C78
Case ID:	CU0000001934
Tissue of Origin:	Neural tissue
Site of Finding:	Presacral region
Appearance:	Tumor
Sample Diagnosis (from Pathology Verification):	Chordoma
Normal:	10%
Lesional:	0%
Tumor:	90%
Tumor Hypo/Acellular Stroma:	0%
Tumor Hypercellular Stroma:	0%
Necrosis:	0%
Pathology Verification notes from H&E review:	malignant sacral chordoma with marked nuclear pleomorphism, and perivertebral fascia
CASE Diagnosis (from medical center path report):	Chordoma
Age:	66
Gender:	Male
Tumor Grade:	n/a



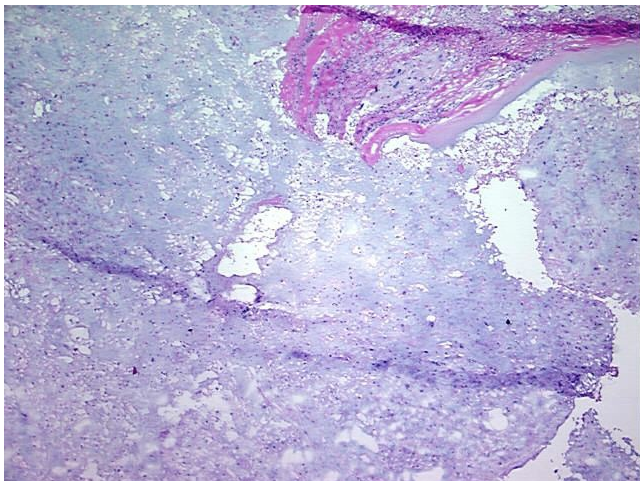
[View online »](#)

Minimum Stage Grouping: n/a

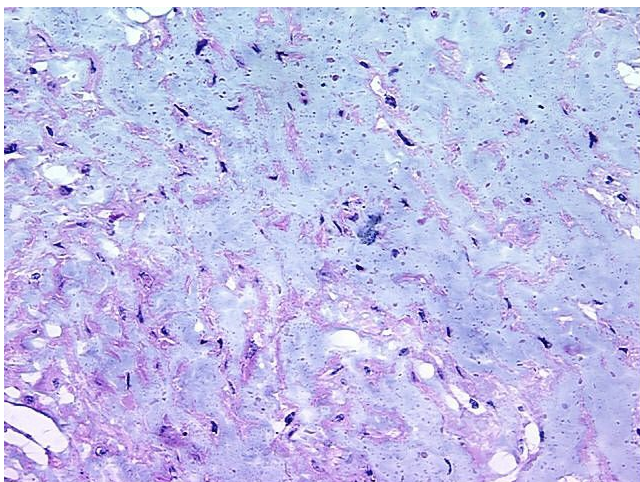
Storage: Store frozen tissue sections at -80°C.

Stability: All frozen tissue sections are stable for 1 year from date of purchase if stored at -80°C without repeated freeze/thaws.

### Product images:



4x Image



20x Image