

Product datasheet for **CS612783**

Frozen Tissue Sections, Sinus contents, maxillofacial

Product data:

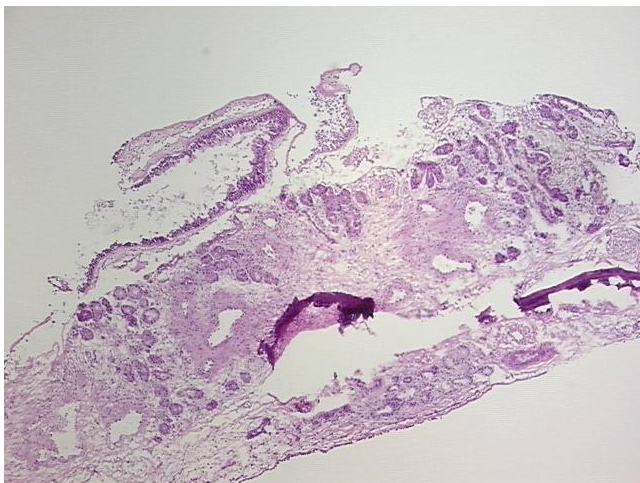
Product Type:	Frozen Sections
Disease State:	Other Disease
Diagnosis Category:	Sinusitis
Tissue:	Nose
Frozen Sample ID:	FR00007596
Case ID:	CU0000001867
Tissue of Origin:	Sinus contents, maxillofacial
Site of Finding:	Sinus contents, maxillofacial
Appearance:	L
Sample Diagnosis (from Pathology Verification):	Sinusitis, chronic
Normal:	0%
Lesional:	100%
Tumor:	0%
Tumor Hypo/Acellular Stroma:	0%
Tumor Hypercellular Stroma:	0%
Necrosis:	0%
Pathology Verification notes from H&E review:	20% mucosa, 75% lamina propria, 5% bone
CASE Diagnosis (from medical center path report):	Sinusitis, chronic
Age:	71
Gender:	Male
Storage:	Store frozen tissue sections at -80°C.



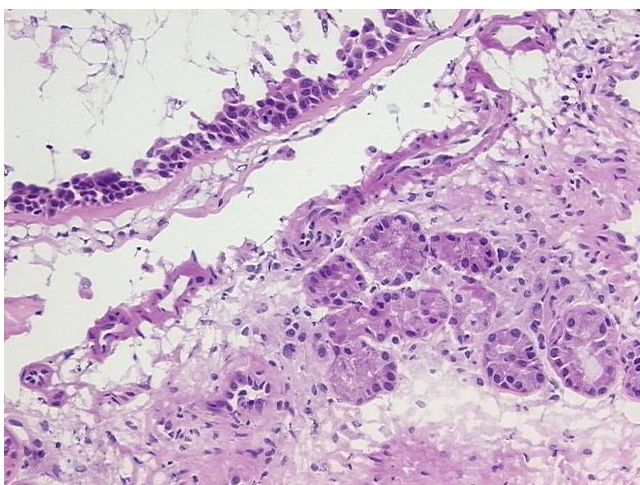
[View online »](#)

Stability: All frozen tissue sections are stable for 1 year from date of purchase if stored at -80°C without repeated freeze/thaws.

Product images:



4x Image



20x Image