

## Product datasheet for **CS612716**

### Frozen Tissue Sections, Stomach

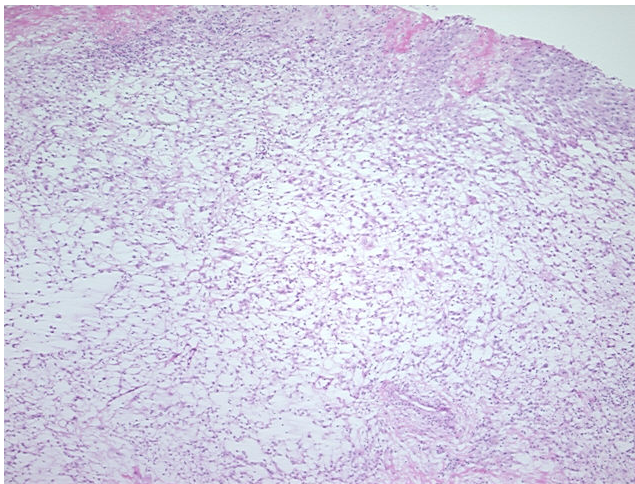
#### Product data:

|   |  |
|---|--|
| Product Type:                                     | Frozen Sections  |
| Disease State:                                    | Other Disease  |
| Diagnosis Category:                               | Gastrointestinal Stromal Tumor (GIST)  |
| Tissue:   | Stomach  |
| Frozen Sample ID:                                 | FR0000769D   |
| Case ID:  | CU0000001857   |
| Tissue of Origin:                                 | Stomach  |
| Site of Finding:                                  | Stomach  |
| Appearance:                                       | T  |
| Sample Diagnosis (from Pathology Verification):   | Gastrointestinal stromal tumor of stomach  |
| Normal:   | 0%   |
| Lesional:   | 0%   |
| Tumor:  | 80%  |
| Tumor Hypo/Acellular Stroma:                      | 20%  |
| Tumor Hypercellular Stroma:                       | 0%   |
| Necrosis:   | 0%   |
| Pathology Verification notes from H&E review:     | Significant percentage of tumor (75%) has intact nuclei but vacuolated cytoplasm |
| CASE Diagnosis (from medical center path report): | Gastrointestinal stromal tumor of stomach, malignant                             |
| Age:  | 66   |
| Gender:   | Female   |
| Tumor Grade:                                      | Not Reported   |

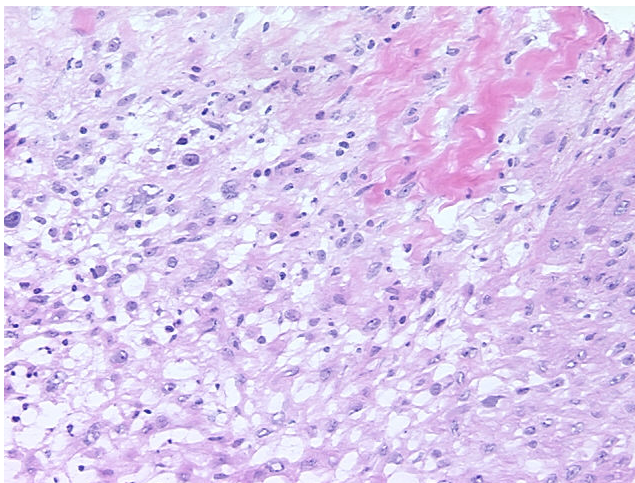

[View online »](#)

|                              |  |
|------------------------------|--|
| Minimum Stage Grouping:      | Not Reported   |
| T (Extent of Primary Tumor): | Not Reported   |
| N (Lymph node metastasis):   | Not Reported   |
| M (Distant metastasis):      | Not Reported   |
| Storage:                     | Store frozen tissue sections at -80°C.   |
| Stability:                   | All frozen tissue sections are stable for 1 year from date of purchase if stored at -80°C without repeated freeze/thaws. |

## Product images:



4x Image



20x Image