

## Product datasheet for CS612656

### Frozen Tissue Sections, Nose

#### Product data:

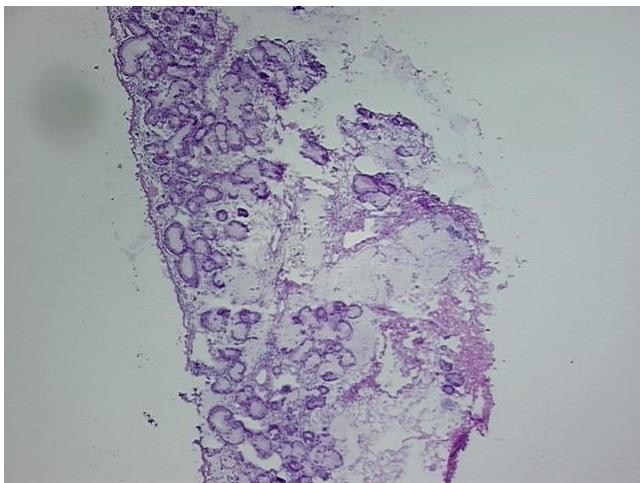
Product Type:	Frozen Sections
Disease State:	Other Disease
Diagnosis Category:	Sinusitis
Tissue:	Nose
Frozen Sample ID:	FR000075E2
Case ID:	CU0000001851
Tissue of Origin:	Nose
Site of Finding:	Nose
Appearance:	L
Sample Diagnosis (from Pathology Verification):	Sinusitis, chronic
Normal:	0%
Lesional:	100%
Tumor:	0%
Tumor Hypo/Acellular Stroma:	0%
Tumor Hypercellular Stroma:	0%
Necrosis:	0%
Pathology Verification notes from H&E review:	65% mucosa, 15% stroma, 20% cartilage/bone
CASE Diagnosis (from medical center path report):	Sinusitis, chronic
Age:	46
Gender:	Female
Storage:	Store frozen tissue sections at -80°C.



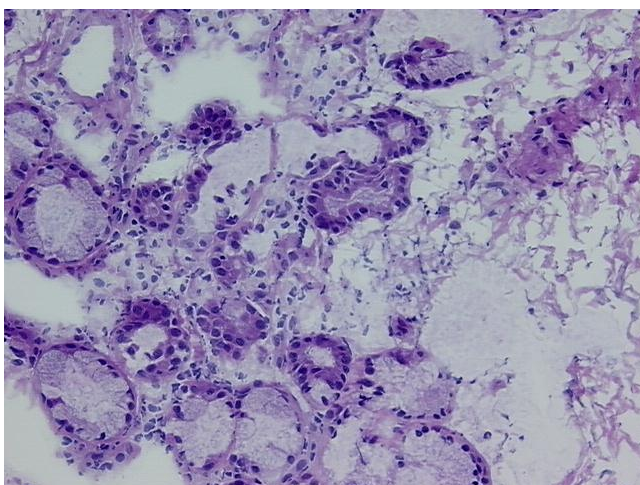
[View online »](#)

**Stability:** All frozen tissue sections are stable for 1 year from date of purchase if stored at -80°C without repeated freeze/thaws.

**Product images:**



4x Image



20x Image