

Product datasheet for **CS612404**

Frozen Tissue Sections, Nose

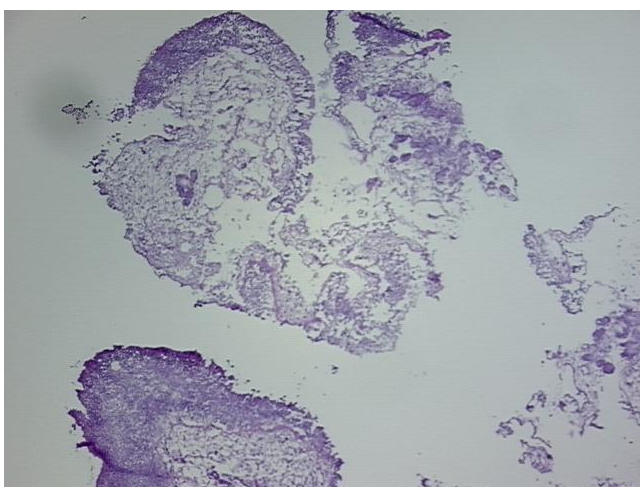
Product data:

| | |
|---|--|
| Product Type: | Frozen Sections |
| Disease State: | Other Disease |
| Diagnosis Category: | Sinusitis |
| Tissue: | Nose |
| Frozen Sample ID: | FR00007126 |
| Case ID: | CU0000001820 |
| Tissue of Origin: | Nose |
| Site of Finding: | Nose |
| Appearance: | L |
| Sample Diagnosis (from Pathology Verification): | Sinusitis, chronic |
| Normal: | 0% |
| Lesional: | 100% |
| Tumor: | 0% |
| Tumor Hypo/Acellular Stroma: | 0% |
| Tumor Hypercellular Stroma: | 0% |
| Necrosis: | 0% |
| Pathology Verification notes from H&E review: | 80% mucosa, 10% stroma, 10% cartilage/bone |
| CASE Diagnosis (from medical center path report): | Papilloma of nose, inverted |
| Age: | 61 |
| Gender: | Female |
| Tumor Grade: | Not Reported |

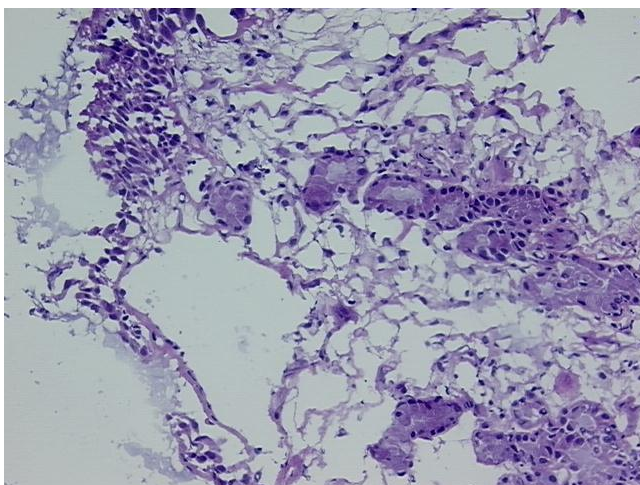


[View online »](#)

| | |
|------------------------------|--|
| Minimum Stage Grouping: | Not Reported |
| T (Extent of Primary Tumor): | Not Reported |
| N (Lymph node metastasis): | Not Reported |
| M (Distant metastasis): | Not Reported |
| Storage: | Store frozen tissue sections at -80°C. |
| Stability: | All frozen tissue sections are stable for 1 year from date of purchase if stored at -80°C without repeated freeze/thaws. |

Product images:

4x Image



20x Image