

Product datasheet for **CS612276**

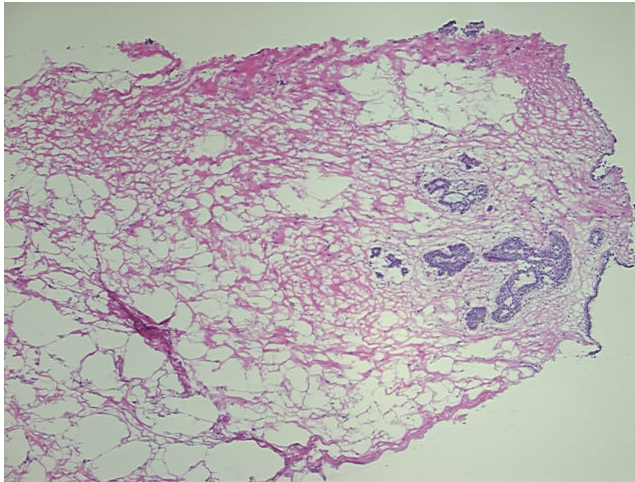
Frozen Tissue Sections, Breast

Product data:

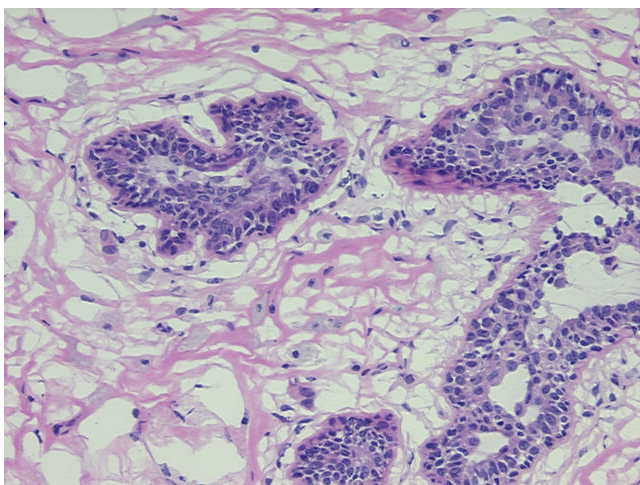
Product Type:	Frozen Sections
Disease State:	Other Disease
Diagnosis Category:	Hyperplasia
Tissue:	Breast
Frozen Sample ID:	FR0000731D
Case ID:	CU0000001796
Tissue of Origin:	Breast
Site of Finding:	Breast
Appearance:	L
Sample Diagnosis (from Pathology Verification):	Ductal hyperplasia of breast, atypical
Normal:	85%
Lesional:	15%
Tumor:	0%
Tumor Hypo/Acellular Stroma:	0%
Tumor Hypercellular Stroma:	0%
Necrosis:	0%
Pathology Verification notes from H&E review:	15% Glandular epithelium, 85% Fibrofatty stroma; Contains atypical ductal hyperplasia
CASE Diagnosis (from medical center path report):	Adenocarcinoma of breast, ductal
Age:	56
Gender:	Female
Tumor Grade:	Nottingham G2: 6-7 points Intermediate combined grade (moderately favorable)


[View online »](#)

Minimum Stage Grouping:	I
T (Extent of Primary Tumor):	T1b
N (Lymph node metastasis):	N0
M (Distant metastasis):	MX
Diagnostic Test Results:	Estrogen receptor ~ ER ! by IHC,Positive; ERBB2,Not amplified; HER2 ~ ERBB2 ~ Neu ! by IHC,Equivocal
Storage:	Store frozen tissue sections at -80°C.
Stability:	All frozen tissue sections are stable for 1 year from date of purchase if stored at -80°C without repeated freeze/thaws.

Product images:


4x Image



20x Image