

## Product datasheet for **CS612274**

### Frozen Tissue Sections, Breast, left

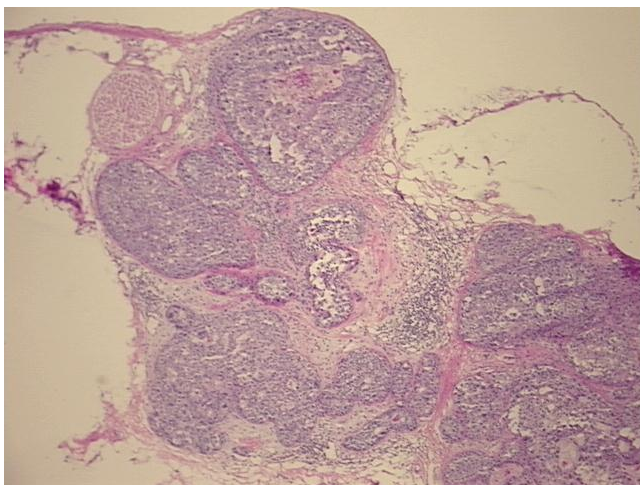
#### Product data:

Product Type:	Frozen Sections
Disease State:	Cancer
Diagnosis Category:	Breast Cancer
Tissue:	Breast
Frozen Sample ID:	FR0000731B
Case ID:	CU0000001796
Tissue of Origin:	Breast, left
Site of Finding:	Breast, left
Appearance:	T
Sample Diagnosis (from Pathology Verification):	Carcinoma in situ of breast
Normal:	90%
Lesional:	0%
Tumor:	10%
Tumor Hypo/Acellular Stroma:	0%
Tumor Hypercellular Stroma:	0%
Necrosis:	0%
Pathology Verification notes from H&E review:	Non Tumor Structures: 20% Glandular epithelium, 50% Stroma, 30% Adipose tissue
CASE Diagnosis (from medical center path report):	Adenocarcinoma of breast, ductal
Age:	56
Gender:	Female
Tumor Grade:	Nottingham G2: 6-7 points Intermediate combined grade (moderately favorable)

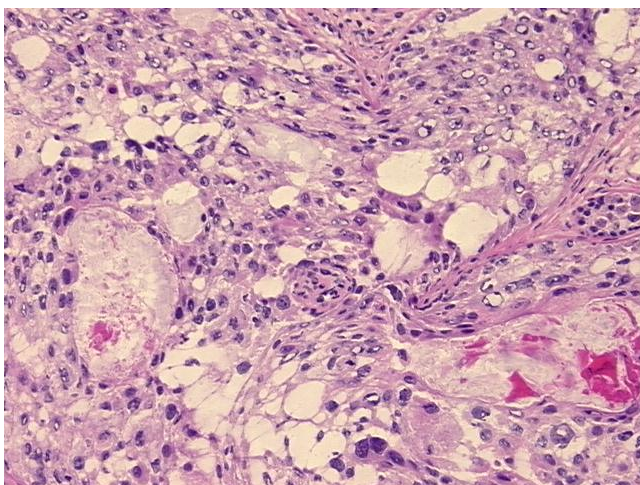


[View online »](#)

Minimum Stage Grouping:	I
T (Extent of Primary Tumor):	T1b
N (Lymph node metastasis):	N0
M (Distant metastasis):	MX
Diagnostic Test Results:	Estrogen receptor ~ ER ! by IHC,Positive; ERBB2,Not amplified; HER2 ~ ERBB2 ~ Neu ! by IHC,Equivocal
Storage:	Store frozen tissue sections at -80°C.
Stability:	All frozen tissue sections are stable for 1 year from date of purchase if stored at -80°C without repeated freeze/thaws.

**Product images:**

4x Image



20x Image