

Product datasheet for **CS611931**

Frozen Tissue Sections, Pancreas

Product data:

| | |
|---|--|
| Product Type: | Frozen Sections |
| Disease State: | Other Disease |
| Diagnosis Category: | Atrophy |
| Tissue: | Pancreas |
| Frozen Sample ID: | FR00006F56 |
| Case ID: | CU0000001773 |
| Tissue of Origin: | Pancreas |
| Site of Finding: | Pancreas |
| Appearance: | L |
| Sample Diagnosis (from Pathology Verification): | Atrophy of tissue |
| Normal: | 0% |
| Lesional: | 100% |
| Tumor: | 0% |
| Tumor Hypo/Acellular Stroma: | 0% |
| Tumor Hypercellular Stroma: | 0% |
| Necrosis: | 0% |
| Pathology Verification notes from H&E review: | 40% glands and islets; 60% stroma; Atrophic pancreas |
| CASE Diagnosis (from medical center path report): | Adenocarcinoma of ampulla of Vater |
| Age: | 51 |
| Gender: | Female |
| Tumor Grade: | AJCC G3: Poorly differentiated |



[View online »](#)

Minimum Stage Grouping: IIA

T (Extent of Primary Tumor): T3

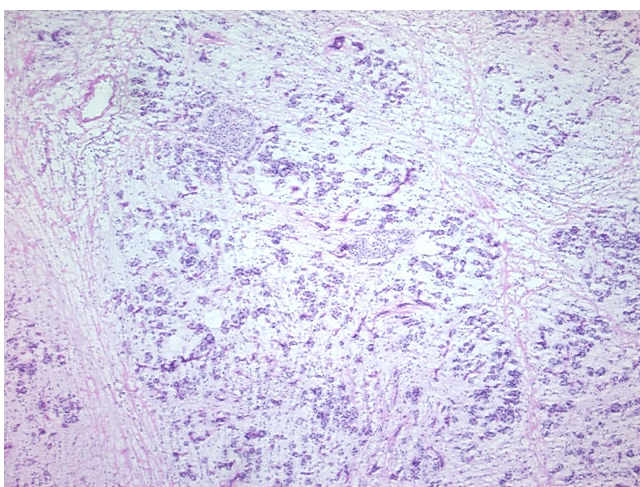
N (Lymph node metastasis): N0

M (Distant metastasis): MX

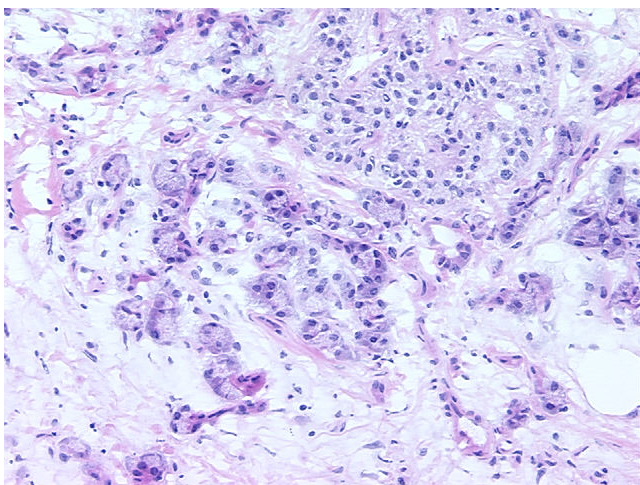
Storage: Store frozen tissue sections at -80°C.

Stability: All frozen tissue sections are stable for 1 year from date of purchase if stored at -80°C without repeated freeze/thaws.

Product images:



4x Image



20x Image