

Product datasheet for CS611379

Frozen Tissue Sections, Pleura

Product data:

Product Type:	Frozen Sections
Disease State:	Cancer
Diagnosis Category:	Mesothelioma
Tissue:	Lung
Frozen Sample ID:	FR00006A38
Case ID:	CU0000001690
Tissue of Origin:	Pleura
Site of Finding:	Pleura
Appearance:	T
Sample Diagnosis (from Pathology Verification):	Mesothelioma of pleura
Normal:	30%
Lesional:	0%
Tumor:	50%
Tumor Hypo/Acellular Stroma:	20%
Tumor Hypercellular Stroma:	0%
Necrosis:	0%
CASE Diagnosis (from medical center path report):	Mesothelioma of pleura
Age:	86
Gender:	Male
Tumor Grade:	Not Reported
Minimum Stage Grouping:	Not Reported



[View online »](#)

T (Extent of Primary Tumor): TX

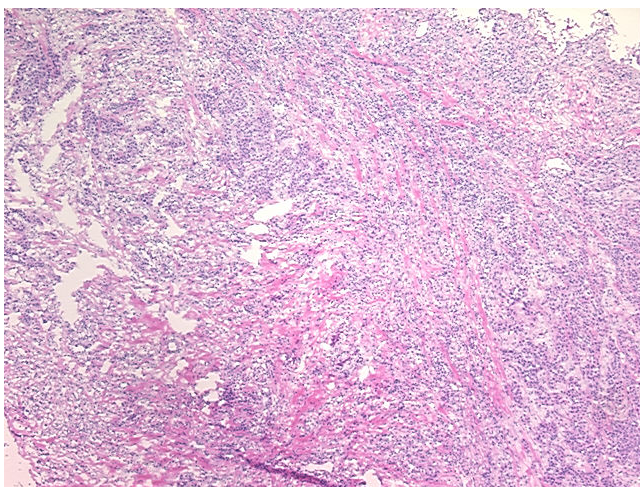
N (Lymph node metastasis): NX

M (Distant metastasis): MX

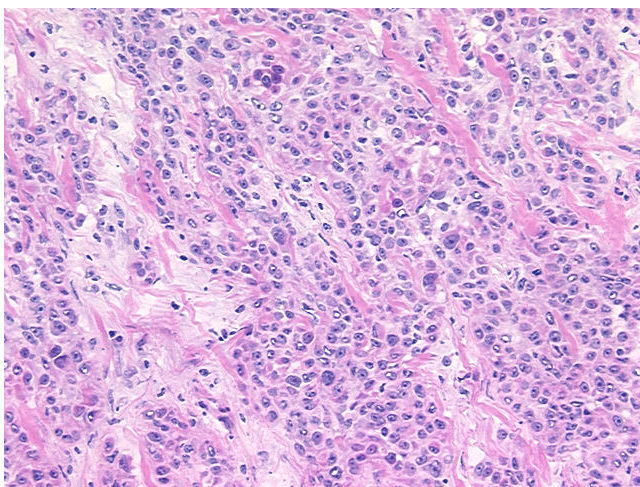
Storage: Store frozen tissue sections at -80°C.

Stability: All frozen tissue sections are stable for 1 year from date of purchase if stored at -80°C without repeated freeze/thaws.

Product images:



4x Image



20x Image