

## Product datasheet for **CS610947**

### Frozen Tissue Sections, Skin

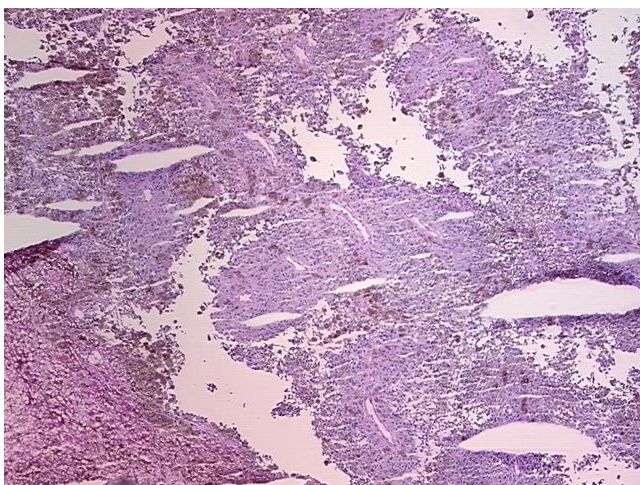
#### Product data:

Product Type:	Frozen Sections
Disease State:	Cancer
Diagnosis Category:	Melanoma
Tissue:	Skin
Frozen Sample ID:	FR000065B8
Case ID:	CU0000001651
Tissue of Origin:	Skin
Site of Finding:	Lymph node
Appearance:	T
Sample Diagnosis (from Pathology Verification):	Malignant melanoma, metastatic
Normal:	0%
Lesional:	0%
Tumor:	60%
Tumor Hypo/Acellular Stroma:	0%
Tumor Hypercellular Stroma:	1%
Necrosis:	39%
Pathology Verification notes from H&E review:	cellular tumor stroma: 100% mixed inflammatory cells
CASE Diagnosis (from medical center path report):	Malignant melanoma, metastatic
Age:	71
Gender:	Male
Tumor Grade:	Not Reported

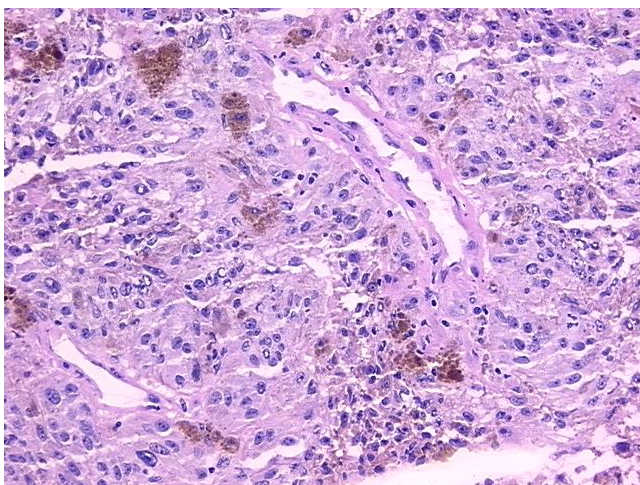


[View online »](#)

Minimum Stage Grouping:	IIIB
T (Extent of Primary Tumor):	TX
N (Lymph node metastasis):	N1b
M (Distant metastasis):	MX
Storage:	Store frozen tissue sections at -80°C.
Stability:	All frozen tissue sections are stable for 1 year from date of purchase if stored at -80°C without repeated freeze/thaws.

**Product images:**

4x Image



20x Image