

Product datasheet for **CS610709**

Frozen Tissue Sections, Kidney

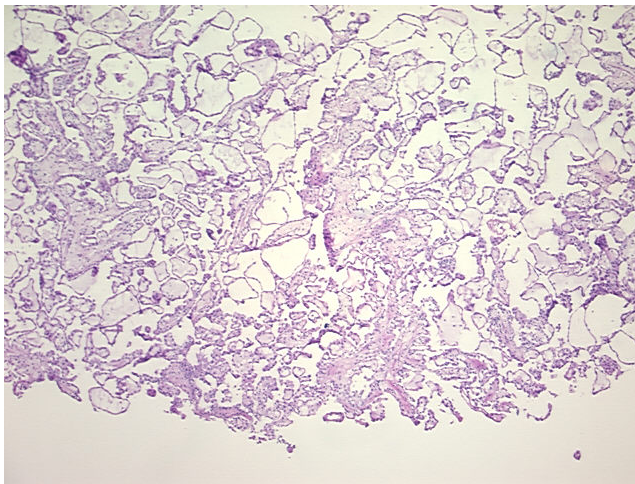
Product data:

Product Type:	Frozen Sections
Disease State:	Cancer
Diagnosis Category:	Renal Cell Carcinoma
Tissue:	Kidney
Frozen Sample ID:	FR0000629C
Case ID:	CU00000001623
Tissue of Origin:	Kidney
Site of Finding:	Kidney
Appearance:	T
Sample Diagnosis (from Pathology Verification):	Carcinoma of kidney, renal cell
Normal:	0%
Lesional:	0%
Tumor:	70%
Tumor Hypo/Acellular Stroma:	30%
Tumor Hypercellular Stroma:	0%
Necrosis:	0%
Pathology Verification notes from H&E review:	Tumor: predominantly papillary and clear cell type; Other Features/Comments: Hypo/acellular stroma consists of histiocytes
CASE Diagnosis (from medical center path report):	Carcinoma of kidney, renal cell, papillary
Age:	76
Gender:	Male
Tumor Grade:	Fuhrman G3: Nuclei very irregular

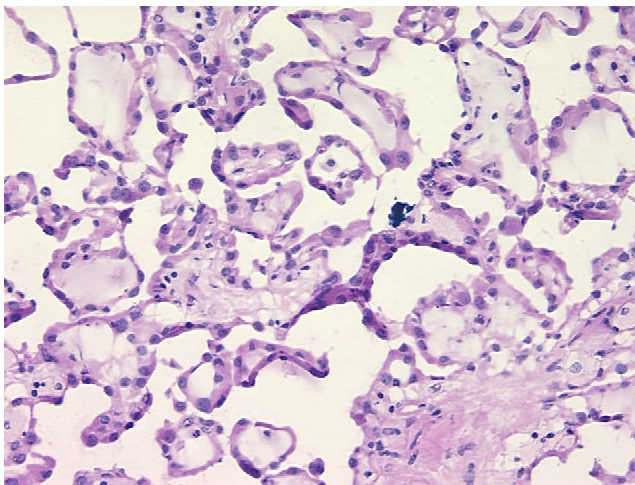

[View online »](#)

Minimum Stage Grouping:	IV
T (Extent of Primary Tumor):	T3a
N (Lymph node metastasis):	N0
M (Distant metastasis):	M1
Storage:	Store frozen tissue sections at -80°C.
Stability:	All frozen tissue sections are stable for 1 year from date of purchase if stored at -80°C without repeated freeze/thaws.

Product images:



4x Image



20x Image