

## Product datasheet for CS610298

### Frozen Tissue Sections, Soft tissue

#### Product data:

|   |   |
|---|---|
| Product Type:                                     | Frozen Sections                           |
| Disease State:                                    | Cancer                                    |
| Diagnosis Category:                               | Sarcoma                                   |
| Tissue:   | Soft tissue                               |
| Frozen Sample ID:                                 | FR00005DCE                                |
| Case ID:  | CU0000001577                              |
| Tissue of Origin:                                 | Soft tissue                               |
| Site of Finding:                                  | Lung                                      |
| Appearance:                                       | T   |
| Sample Diagnosis (from Pathology Verification):   | Sarcoma, synovial, monophasic, metastatic |
| Normal:   | 40%                                       |
| Lesional:   | 0%  |
| Tumor:  | 50%                                       |
| Tumor Hypo/Acellular Stroma:                      | 0%  |
| Tumor Hypercellular Stroma:                       | 10%                                       |
| Necrosis:   | 0%  |
| CASE Diagnosis (from medical center path report): | Sarcoma, synovial, monophasic, metastatic |
| Age:  | 46  |
| Gender:   | Female                                    |
| Tumor Grade:                                      | Not Reported                              |
| Minimum Stage Grouping:                           | IV  |



[View online »](#)

T (Extent of Primary Tumor): TX

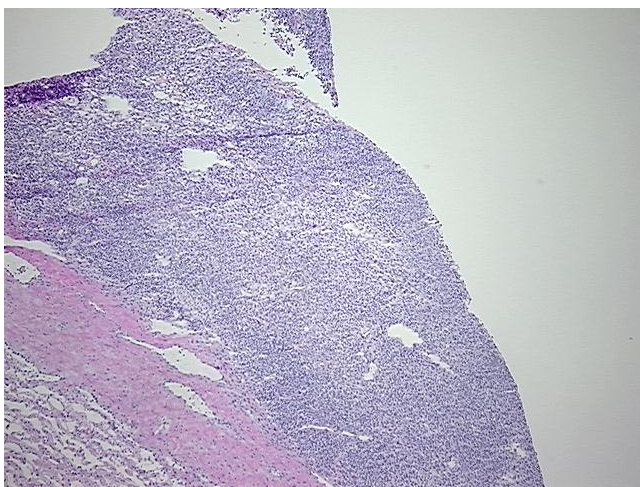
N (Lymph node metastasis): NX

M (Distant metastasis): M1

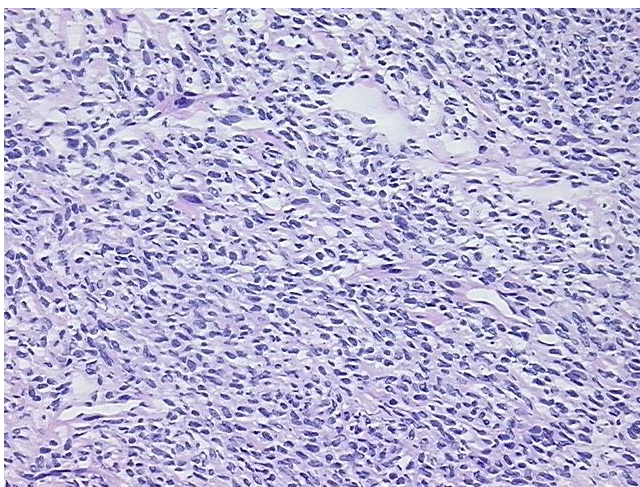
Storage: Store frozen tissue sections at -80°C.

Stability: All frozen tissue sections are stable for 1 year from date of purchase if stored at -80°C without repeated freeze/thaws.

### Product images:



4x Image



20x Image