

Product datasheet for **CS610198**

Frozen Tissue Sections, Ovary: left

Product data:

Product Type:	Frozen Sections
Disease State:	Other Disease
Diagnosis Category:	Germ Cell Tumor
Tissue:	Ovary
Frozen Sample ID:	FR00005D28
Case ID:	CU0000001571
Tissue of Origin:	Ovary: left
Site of Finding:	Ovary: left
Appearance:	T
Sample Diagnosis (from Pathology Verification):	Tumor of ovary, mixed germ cell
Normal:	0%
Lesional:	0%
Tumor:	85%
Tumor Hypo/Acellular Stroma:	10%
Tumor Hypercellular Stroma:	5%
Necrosis:	0%
Pathology Verification notes from H&E review:	Tumor: predominantly dysgerminoma
CASE Diagnosis (from medical center path report):	Tumor of ovary, mixed germ cell
Age:	21
Gender:	Female
Tumor Grade:	Not Reported



[View online »](#)

Minimum Stage Grouping: IA

T (Extent of Primary Tumor): T1a

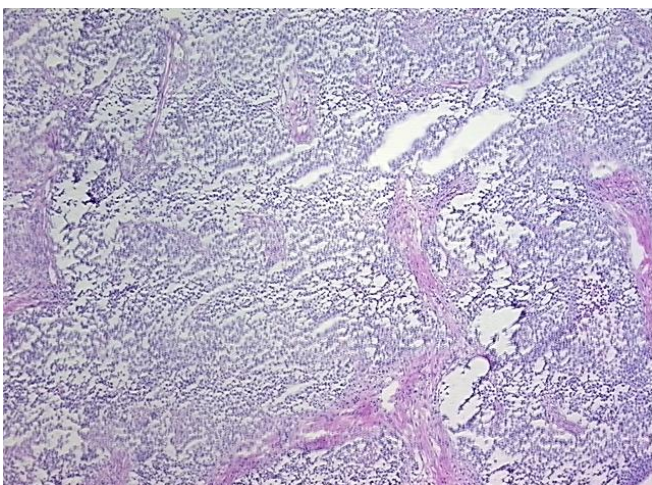
N (Lymph node metastasis): N0

M (Distant metastasis): MX

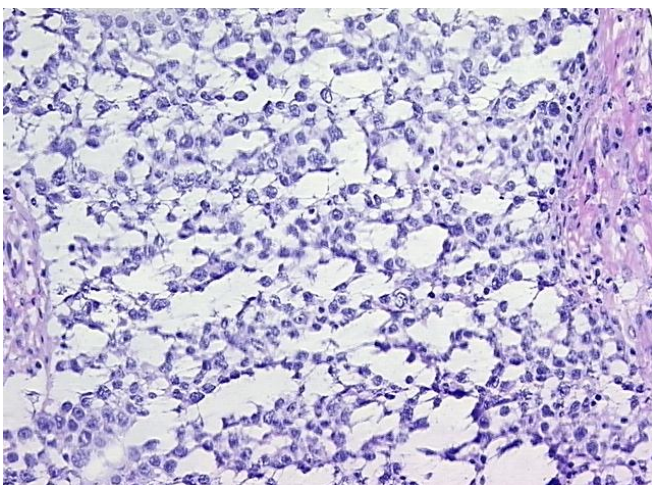
Storage: Store frozen tissue sections at -80°C.

Stability: All frozen tissue sections are stable for 1 year from date of purchase if stored at -80°C without repeated freeze/thaws.

Product images:



4x Image



20x Image