

## Product datasheet for **CS610042**

### Frozen Tissue Sections, Thyroid gland

#### Product data:

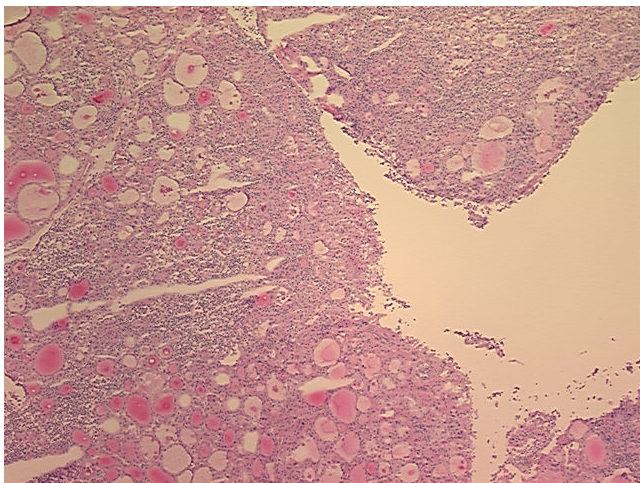
|   |  |
|---|--|
| Product Type:                                     | Frozen Sections  |
| Disease State:                                    | Other Disease  |
| Diagnosis Category:                               | Thyroiditis  |
| Tissue:   | Thyroid gland  |
| Frozen Sample ID:                                 | FR00005AB3   |
| Case ID:  | CU0000001548   |
| Tissue of Origin:                                 | Thyroid gland  |
| Site of Finding:                                  | Thyroid gland  |
| Appearance:                                       | L  |
| Sample Diagnosis (from Pathology Verification):   | Thyroiditis, chronic                                       |
| Normal:   | 0%   |
| Lesional:   | 100%   |
| Tumor:  | 0%   |
| Tumor Hypo/Acellular Stroma:                      | 0%   |
| Tumor Hypercellular Stroma:                       | 0%   |
| Necrosis:   | 0%   |
| Pathology Verification notes from H&E review:     | 60% thyroid follicles, 39% chronic inflammatory infiltrate |
| CASE Diagnosis (from medical center path report): | Thyroiditis, lymphocytic                                   |
| Age:  | 36   |
| Gender:   | Female   |
| Storage:  | Store frozen tissue sections at -80°C.                     |



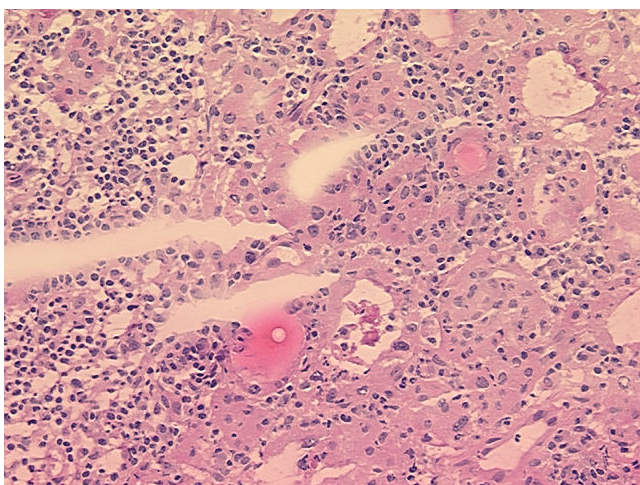
[View online »](#)

**Stability:** All frozen tissue sections are stable for 1 year from date of purchase if stored at -80°C without repeated freeze/thaws.

**Product images:**



4x Image



20x Image