

## Product datasheet for **CS609965**

### Frozen Tissue Sections, Lymphoid tissue

#### Product data:

Product Type:	Frozen Sections
Disease State:	Cancer
Diagnosis Category:	Leukemia
Tissue:	Lymphoid tissue
Frozen Sample ID:	FR00005998
Case ID:	CU0000001541
Tissue of Origin:	Lymphoid tissue
Site of Finding:	Spleen
Appearance:	Tumor
Sample Diagnosis (from Pathology Verification):	Leukemia, lymphocytic, chronic
Normal:	70%
Lesional:	0%
Tumor:	30%
Tumor Hypo/Acellular Stroma:	0%
Tumor Hypercellular Stroma:	0%
Necrosis:	0%
Pathology Verification notes from H&E review:	Consistent with B-cell chronic lymphocytic leukemia involving red pulp
CASE Diagnosis (from medical center path report):	Leukemia, lymphocytic, chronic
Age:	86
Gender:	Male
Tumor Grade:	Not Reported



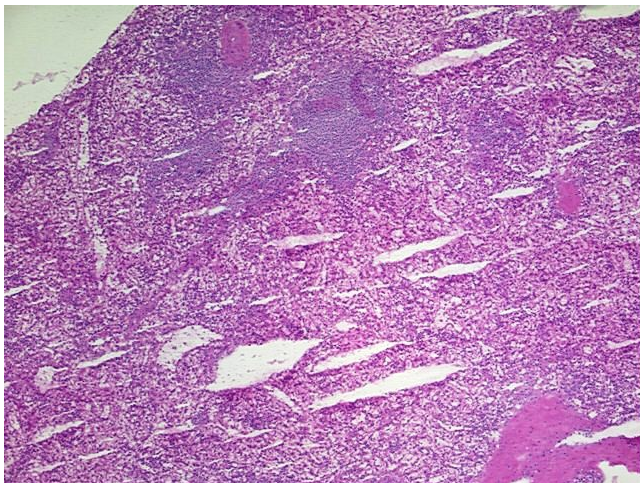
[View online »](#)

Minimum Stage  
Grouping: IE

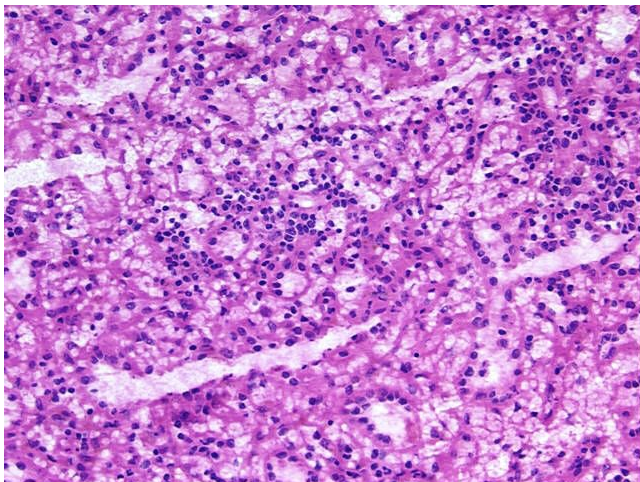
Storage: Store frozen tissue sections at -80°C.

Stability: All frozen tissue sections are stable for 1 year from date of purchase if stored at -80°C without repeated freeze/thaws.

### Product images:



4x Image



20x Image