

Product datasheet for CS609659

Frozen Tissue Sections, Thyroid gland

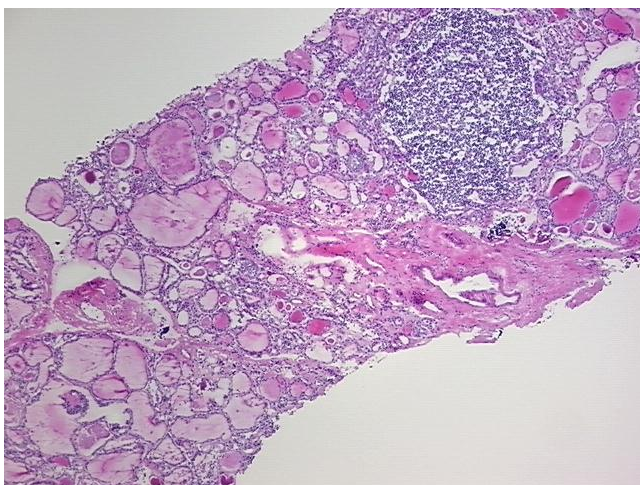
Product data:

| | |
|---|--------------------------------|
| Product Type: | Frozen Sections |
| Disease State: | Other Disease |
| Diagnosis Category: | Thyroiditis |
| Tissue: | Thyroid gland |
| Frozen Sample ID: | FR0000559F |
| Case ID: | CU0000001510 |
| Tissue of Origin: | Thyroid gland |
| Site of Finding: | Thyroid gland |
| Appearance: | L |
| Sample Diagnosis (from Pathology Verification): | Thyroiditis, lymphocytic |
| Normal: | 0% |
| Lesional: | 100% |
| Tumor: | 0% |
| Tumor Hypo/Acellular Stroma: | 0% |
| Tumor Hypercellular Stroma: | 0% |
| Necrosis: | 0% |
| CASE Diagnosis (from medical center path report): | Adenoma of thyroid, follicular |
| Age: | 41 |
| Gender: | Female |
| Tumor Grade: | Not Reported |
| Minimum Stage Grouping: | Not Reported |

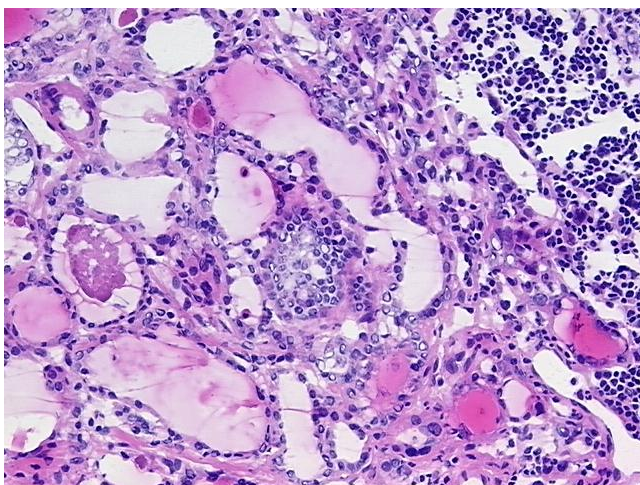


[View online »](#)

| | |
|------------------------------|--|
| T (Extent of Primary Tumor): | Not Reported |
| N (Lymph node metastasis): | Not Reported |
| M (Distant metastasis): | Not Reported |
| Storage: | Store frozen tissue sections at -80°C. |
| Stability: | All frozen tissue sections are stable for 1 year from date of purchase if stored at -80°C without repeated freeze/thaws. |

Product images:

4x Image



20x Image