

## Product datasheet for **CS609469**

### Frozen Tissue Sections, Small intestine

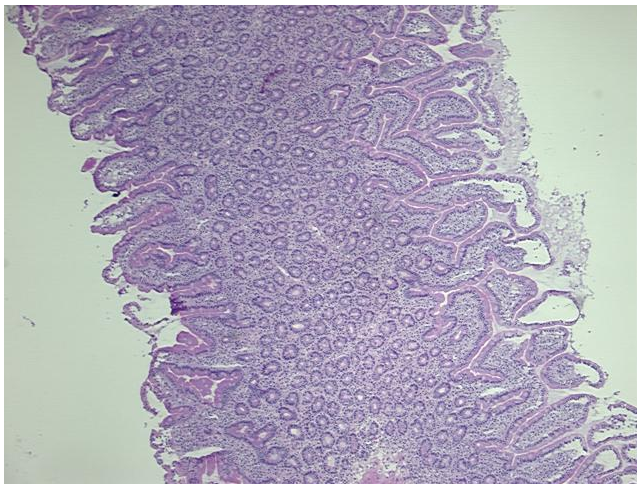
#### Product data:

Product Type:	Frozen Sections
Disease State:	Normal
Diagnosis Category:	Normal
Tissue:	Small intestine
Frozen Sample ID:	FR0000543F
Case ID:	CU0000001493
Tissue of Origin:	Small intestine
Site of Finding:	Small intestine
Appearance:	R
Sample Diagnosis (from Pathology Verification):	Within normal limits
Normal:	100%
Lesional:	0%
Tumor:	0%
Tumor Hypo/Acellular Stroma:	0%
Tumor Hypercellular Stroma:	0%
Necrosis:	0%
Pathology Verification notes from H&E review:	70% Mucosa, 30% Submucosa, 0% Muscle
CASE Diagnosis (from medical center path report):	Cholangiocarcinoma of bile duct
Age:	76
Gender:	Male
Tumor Grade:	AJCC G3: Poorly differentiated

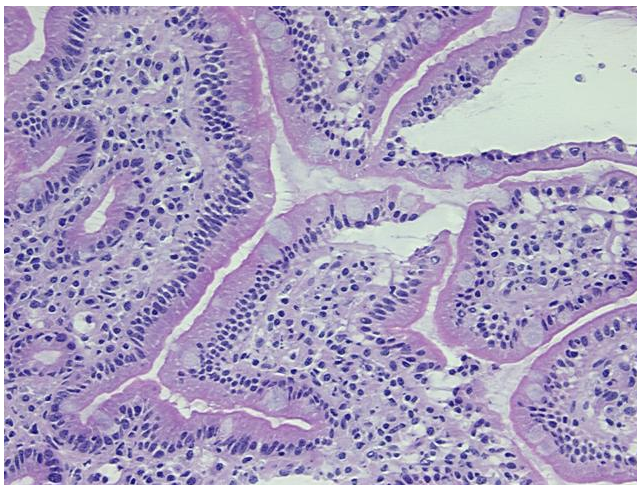

[View online »](#)

Minimum Stage Grouping:	IIA
T (Extent of Primary Tumor):	T3
N (Lymph node metastasis):	N0
M (Distant metastasis):	MX
Storage:	Store frozen tissue sections at -80°C.
Stability:	All frozen tissue sections are stable for 1 year from date of purchase if stored at -80°C without repeated freeze/thaws.

## Product images:



4x Image



20x Image