

Product datasheet for **CS609465**

Frozen Tissue Sections, Bile duct

Product data:

| | |
|---|---------------------------------|
| Product Type: | Frozen Sections |
| Disease State: | Cancer |
| Tissue: | Bile duct |
| Frozen Sample ID: | FR00005435 |
| Case ID: | CU0000001493 |
| Tissue of Origin: | Bile duct |
| Site of Finding: | Pancreas |
| Appearance: | Tumor |
| Sample Diagnosis (from Pathology Verification): | Cholangiocarcinoma of bile duct |
| Normal: | 0% |
| Lesional: | 0% |
| Tumor: | 25% |
| Tumor Hypo/Acellular Stroma: | 0% |
| Tumor Hypercellular Stroma: | 10% |
| Necrosis: | 65% |
| CASE Diagnosis (from medical center path report): | Cholangiocarcinoma of bile duct |
| Age: | 76 |
| Gender: | Male |
| Tumor Grade: | AJCC G3: Poorly differentiated |
| Minimum Stage Grouping: | IIA |



[View online »](#)

T (Extent of Primary Tumor): pT3

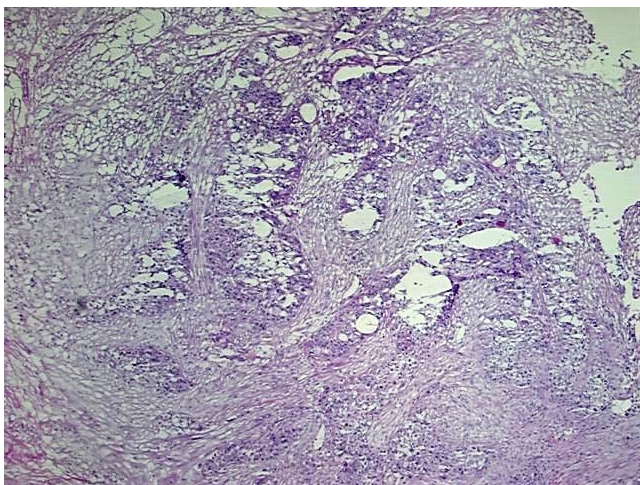
N (Lymph node metastasis): pN0

M (Distant metastasis): pMX

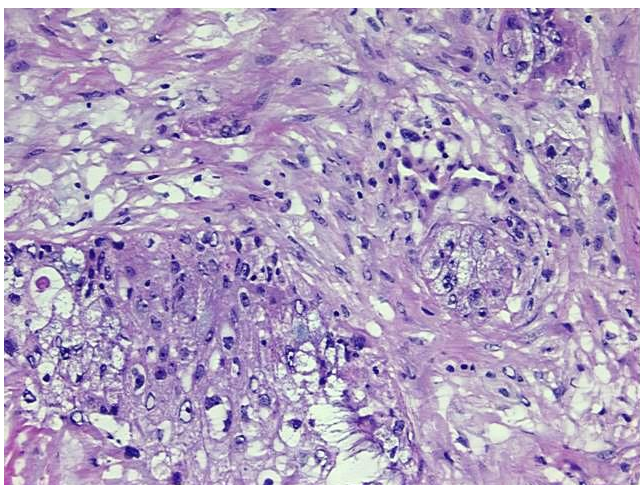
Storage: Store frozen tissue sections at -80°C.

Stability: All frozen tissue sections are stable for 1 year from date of purchase if stored at -80°C without repeated freeze/thaws.

Product images:



4x Image



20x Image