

Product datasheet for **CS609373**

Frozen Tissue Sections, Esophagus

Product data:

| | |
|---|------------------------------------|
| Product Type: | Frozen Sections |
| Disease State: | Cancer |
| Diagnosis Category: | Esophageal/Gastroesophageal Cancer |
| Tissue: | Esophagus |
| Frozen Sample ID: | FR0000533B |
| Case ID: | CU0000001481 |
| Tissue of Origin: | Esophagus |
| Site of Finding: | Esophagus |
| Appearance: | T |
| Sample Diagnosis (from Pathology Verification): | Adenocarcinoma of esophagus |
| Normal: | 0% |
| Lesional: | 0% |
| Tumor: | 30% |
| Tumor Hypo/Acellular Stroma: | 0% |
| Tumor Hypercellular Stroma: | 70% |
| Necrosis: | 0% |
| CASE Diagnosis (from medical center path report): | Adenocarcinoma of esophagus |
| Age: | 71 |
| Gender: | Male |
| Tumor Grade: | AJCC G3: Poorly differentiated |
| Minimum Stage Grouping: | III |



[View online »](#)

T (Extent of Primary Tumor): T3

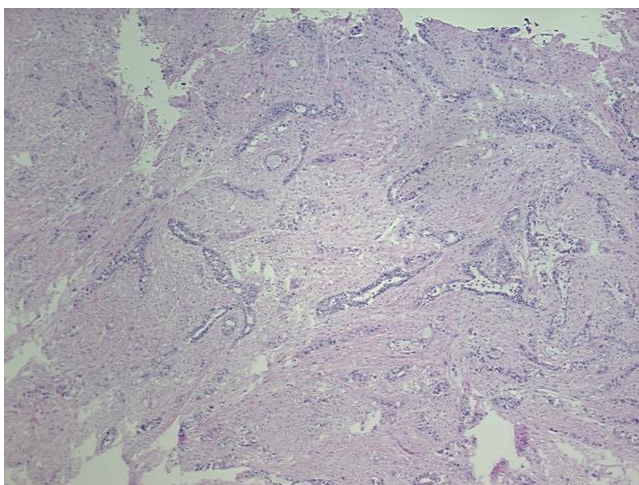
N (Lymph node metastasis): N1

M (Distant metastasis): MX

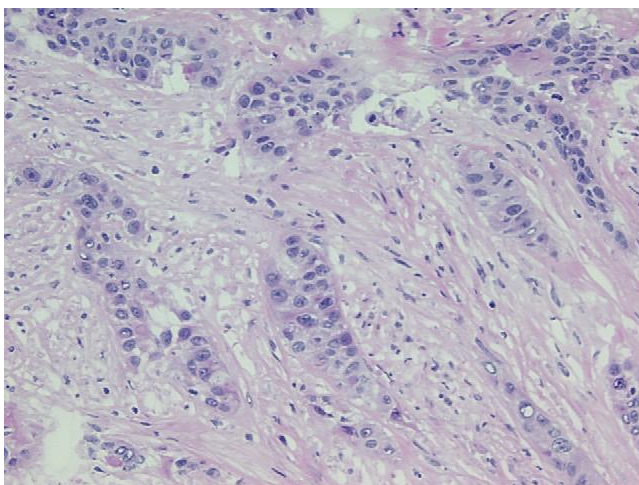
Storage: Store frozen tissue sections at -80°C.

Stability: All frozen tissue sections are stable for 1 year from date of purchase if stored at -80°C without repeated freeze/thaws.

Product images:



4x Image



20x Image