

Product datasheet for **CS609110**

Frozen Tissue Sections, Maxillofacial sinus

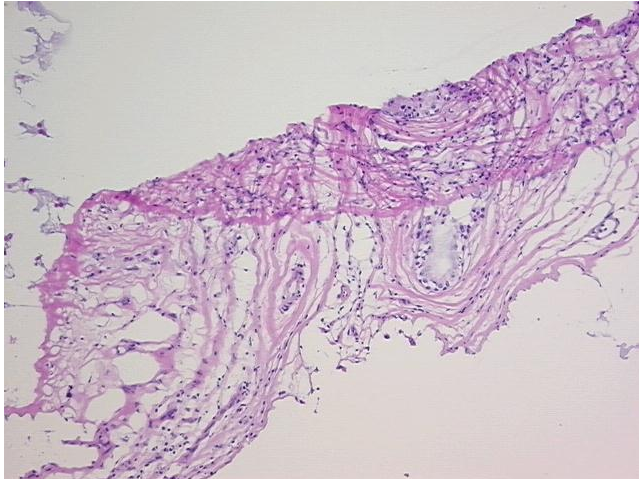
Product data:

Product Type:	Frozen Sections
Disease State:	Other Disease
Diagnosis Category:	Sinusitis
Tissue:	Nose
Frozen Sample ID:	FR00004E63
Case ID:	CU0000001449
Tissue of Origin:	Maxillofacial sinus
Site of Finding:	Maxillofacial sinus
Appearance:	L
Sample Diagnosis (from Pathology Verification):	Sinusitis, chronic
Normal:	0%
Lesional:	100%
Tumor:	0%
Tumor Hypo/Acellular Stroma:	0%
Tumor Hypercellular Stroma:	0%
Necrosis:	0%
CASE Diagnosis (from medical center path report):	Sinusitis, chronic
Age:	41
Gender:	Male
Storage:	Store frozen tissue sections at -80°C.
Stability:	All frozen tissue sections are stable for 1 year from date of purchase if stored at -80°C without repeated freeze/thaws.

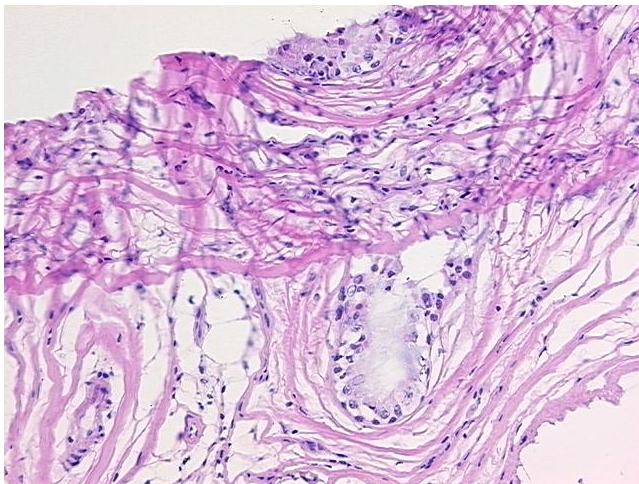


[View online »](#)

Product images:



4x Image



20x Image