

Product datasheet for **CS609067**

Frozen Tissue Sections, Breast

Product data:

| | |
|---|--|
| Product Type: | Frozen Sections |
| Disease State: | Cancer |
| Diagnosis Category: | Breast Cancer |
| Tissue: | Breast |
| Frozen Sample ID: | FR000048FE |
| Case ID: | CU0000001442 |
| Tissue of Origin: | Breast |
| Site of Finding: | Breast |
| Appearance: | Tumor |
| Sample Diagnosis (from Pathology Verification): | Adenocarcinoma of breast, ductal |
| Normal: | 0% |
| Lesional: | 0% |
| Tumor: | 35% |
| Tumor Hypo/Acellular Stroma: | 0% |
| Tumor Hypercellular Stroma: | 1% |
| Necrosis: | 64% |
| CASE Diagnosis (from medical center path report): | Adenocarcinoma of breast, ductal |
| Age: | 61 |
| Gender: | Female |
| Tumor Grade: | Nottingham G2: 6-7 points Intermediate combined grade (moderately favorable) |
| Minimum Stage Grouping: | IIB |



[View online »](#)

T (Extent of Primary Tumor): pT2

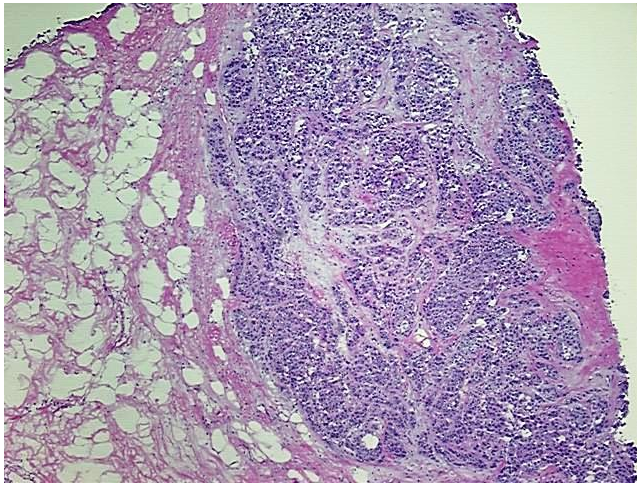
N (Lymph node metastasis): pN1bi

M (Distant metastasis): pMX

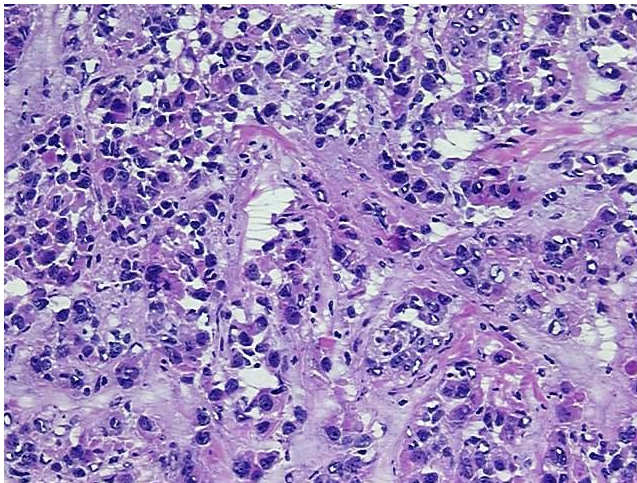
Storage: Store frozen tissue sections at -80°C.

Stability: All frozen tissue sections are stable for 1 year from date of purchase if stored at -80°C without repeated freeze/thaws.

Product images:



4x Image



20x Image